

THE GUARDIAN VERSATILE SYSTEM

12MM
PREMIUM RUBBER TILES



Premium Interlocking Tiles

Whether you are working out in your home gym or at a multi-use recreational facility, your athletic surface should be durable, stable and safe.

The **Guardian Versatile System** provides all of that and more. Manufactured from high tensile strength recycled re-vulcanized rubber, the tiles are 4 times stronger than traditional rolled rubber flooring. The proprietary **Safe Step** diamond top technology increases traction in wet environments and provides a stable anti-slip foundation for high intensity workouts. When the health and safety of athletes in group environments is a priority, the closed **Safe-Cell** construction prevents moisture, bacteria and viral content from penetrating into the rubber and allows for a safer and more sanitary environment.

- MASS - Modular Athletic Surface System
- 2x2, 4x4 and 4x6 tile intergration
- 4x stronger than urethane rubber tiles and rolls
- Closed Cell anti-microbial / anti-bacterial construction
- SafeStep Diamond Top Surface
- Made in the USA from recycled rubber



HEAVY DUTY



HIGH
TENSILE



INTERLOCKING
PRODUCT



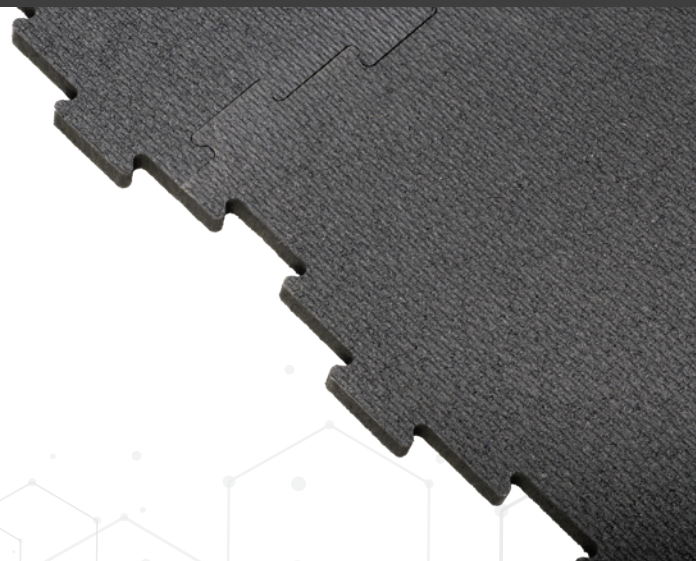
CLOSED
CELL



ANTI
MICROBIAL



MADE IN
THE USA



MADE IN
THE USA



RECYCLED



ANTI
MICROBIAL



CLOSED
CELL



HEAVY
DUTY



NON-SLIP



SKATE
SAFE



INTERLOCK
PRODUCT



ENERGY REVOLUTION

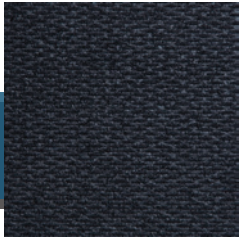
WHERE TO USE:

Weight Rooms
Cardio Rooms
Group Exercise
Functional Training Zones
Outdoor Fitness Spaces

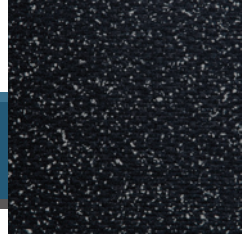
THE GUARDIAN VERSATILE SYSTEM

12MM
PREMIUM RUBBER TILES

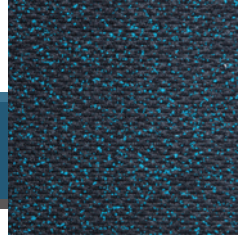
MAT COLORS & SIZES



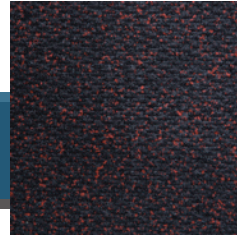
BLACK



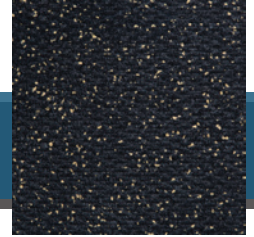
GREY



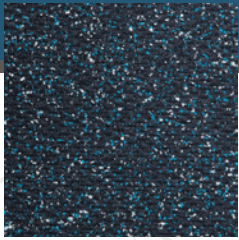
BLUE



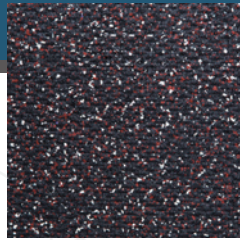
RED



TAN



BLUE/GREY



RED/GREY

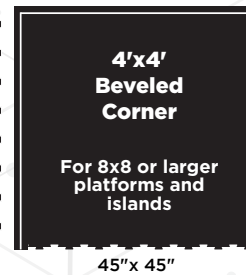
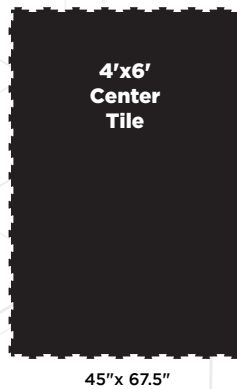


TAN/GREY

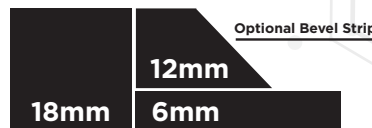
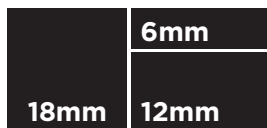


MASS
MODULAR ATHLETIC SURFACE SYSTEM

MASS is a revolutionary innovation in interlocking tiles. Now 2x2, 4x4 and 4x6 tiles can interlock with each other.



Mix and match different Guardian Versatile surfaces & thicknesses by stacking or using an optional beveled transition.



SafeStep



Diamond top pattern texture provides maximum traction in wet and dry conditions



Closed cell anti-bacterial/anti-microbial product that is non-absorbent and repels moisture to prevent mold and bacterial growth.