



MUSSON RUBBER CO.

- **STAIR TREADS**

Distributed by



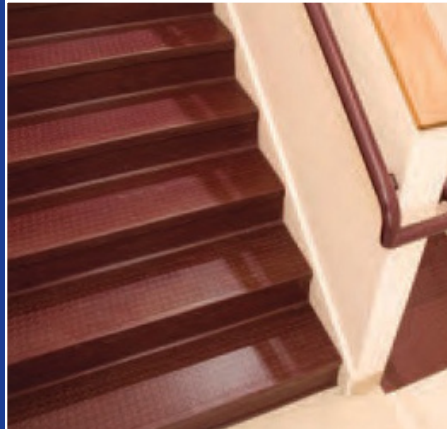
***Diamond  
Safety  
Concepts***

A Revolution in Floor Safety

760-942-2914

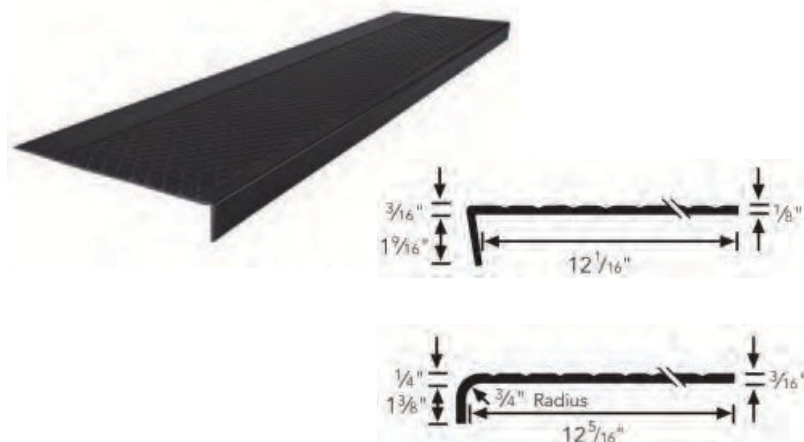
[bob@diamond-safety.com](mailto:bob@diamond-safety.com)

[www.diamond-safety.com](http://www.diamond-safety.com)



## RUBBER DESIGN STAIR TREAD SYSTEMS

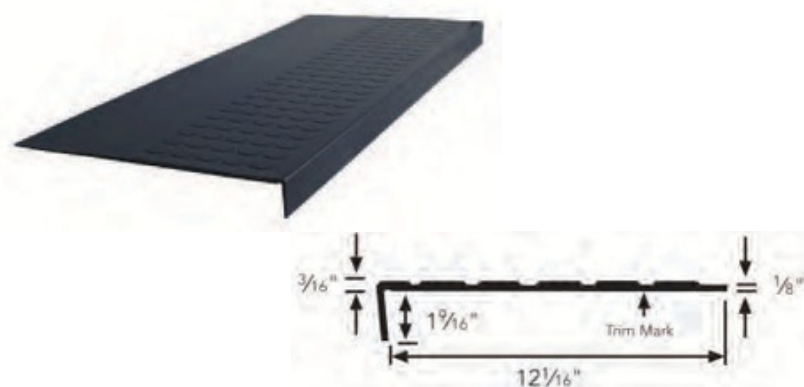
### No. 620D



A raised diamond pattern rubber stair tread for use in commercial, industrial or institutional buildings. The diamond design surface is 8-1/4" deep with a 3" smooth back. Install with Musson RCM510 Acrylic Adhesive, No. 400 Neoprene Contact Adhesive, or No. 300 Water-Based Contact Adhesive. No. 620D treads are available in either square nose or curve nose design; square nose treads are 12-1/16" deep with a 1-9/16" long nose and curve nose treads are 12-5/16" deep with a 1-3/8" long nose.

Select from standard lengths of 36", 42", 48", 54", 60", 66", 72", 78", 84", 90", 96", 102" or 108"; treads over 72" long are available in square nose only. Choose from standard marbleized and solid colors as shown on page 3. No. 620D treads are available with 2-3/4" abrasive strips (No. GS620D) or a single 2" abrasive strip (No. GS620DVI); abrasive strips are available in Black (standard), Safety Yellow, Beige, Gray or Brown.

### No. 780R



A high-profile pattern rubber stair tread for use in commercial, industrial or institutional buildings. The disc design surface is 7" deep with a 4-1/4" smooth back. Install with Musson RCM510 Acrylic Adhesive, No. 400 Neoprene Contact Adhesive, or No. 300 Water-Based Contact Adhesive. No. 780R treads are available in square nose only; treads are 12-1/16" deep with a 1-9/16" long nose.

Select from standard lengths of 36", 42", 48", 54", 60", 66", 72", 78", 84", 90", 96", 102" or 108". Choose from standard marbleized and solid colors as shown on page 3. No. 780R treads are available with 2-3/4" abrasive strips (No. GS780R) or a single 2" abrasive strip (No. GS780RVI); abrasive strips are available in Black (standard), Safety Yellow, Beige, Gray or Brown.

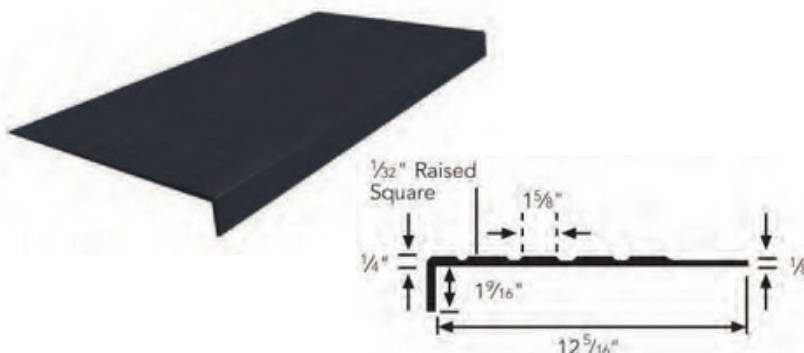
### No. 820R



A low-profile pattern rubber stair tread for use in commercial, industrial or institutional buildings. The disc design surface is 7" deep with a 4-1/4" smooth back. Install with Musson RCM510 Acrylic Adhesive, No. 400 Neoprene Contact Adhesive, or No. 300 Water-Based Contact Adhesive. No. 820R treads are available in square nose only; treads are 12-1/2" deep with a 1-9/16" long nose.

Select from standard lengths of 36", 42", 48", 54", 60", 66", or 72". Choose from standard marbleized and solid colors as shown on page 3. No. 820R treads are available with 2-3/4" abrasive strips (No. GS820R) or a single 2" abrasive strip (No. GS820RVI); abrasive strips are available in Black (standard), Safety Yellow, Beige, Gray or Brown.

### No. 520S

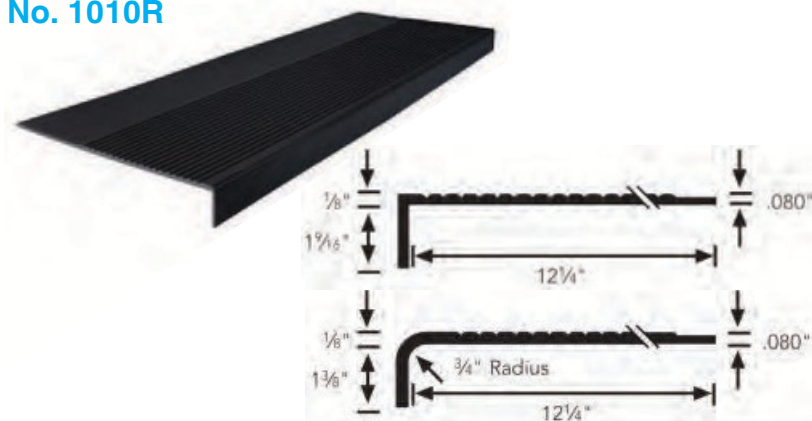


A raised square pattern rubber stair tread for use in commercial, industrial or institutional buildings. The square design surface is 7-3/4" deep with a 3-3/16" smooth back. Install with Musson RCM510 Acrylic Adhesive, No. 400 Neoprene Contact Adhesive, or No. 300 Water-Based Contact Adhesive. No. 520S treads are available in square nose only; treads are 12-5/16" deep with a 1-9/16" long nose.

Select from standard lengths of 36", 42", 48", 54", 60", 66", 72", 78", 84", 90", 96", 102" or 108". Choose from standard marbleized and solid colors as shown on page 3. No. 520S treads are available with 2-3/4" abrasive strips (No. GS520S) or a single 2" abrasive strip (No. GS520SVI); abrasive strips are available in Black (standard), Safety Yellow, Beige, Gray or Brown.

## RUBBER DESIGN STAIR TREAD SYSTEMS

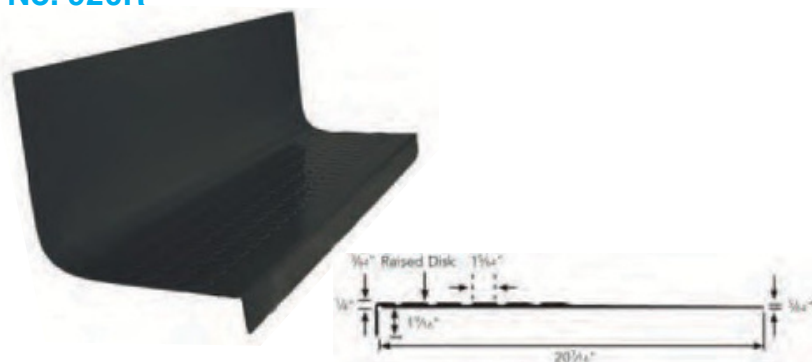
### No. 1010R



A raised-rib pattern rubber stair tread for light commercial use. The rib pattern surface is 6-3/4" deep with a 4-3/8" smooth back. Install with Musson RCM510 Acrylic Adhesive, No. 400 Neoprene Contact Adhesive, or No. 300 Water-Based Contact Adhesive. No. 1010R treads are available in square nose only; treads are 12-1/2" deep with a 1-9/16" long nose.

Select from standard lengths of 36", 42", 48", 54", 60", 66", or 72". Choose from standard marbled and solid colors as shown below.

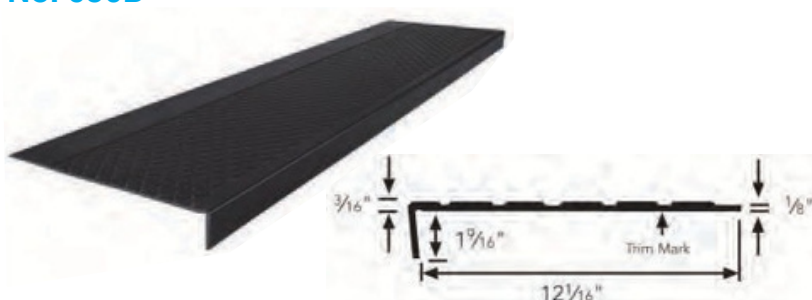
### No. 920R



A high-profile pattern one-piece rubber stair tread/riser for use in commercial, industrial or institutional buildings. The disc design surface is 7" deep with a 12-1/2" smooth back/riser surface. Install with Musson RCM510 Acrylic Adhesive, No. 400 Neoprene Contact Adhesive, or No. 300 Water-Based Contact Adhesive. No. 920R treads are available in square nose only; treads are 12-1/16" deep with a 1-9/16" long nose.

Select from standard lengths of 36", 42", 48", 54", 60", 66", 72", 78", 84", 90", 96", 102" or 108". Choose from standard marbled and solid colors as shown below. No. 920R treads are available with 2-3/4" abrasive strips (No. GS920R) or a single 2" abrasive strip (No. GS920RVI); abrasive strips are available in Black (standard), Safety Yellow, Beige, Gray or Brown.

### No. 630D



Our No. 630D Outdoor Rubber Stair treads are manufactured with a special compound for exterior applications. The raised diamond design surface is 8" deep with a 3" smooth back. Install with Musson No. 775 Epoxy Adhesive. No. 630D treads are available in square nose only; treads are 12" deep with a 1-9/16" long nose. No. 630D treads are the only rubber treads we recommend for exterior applications.

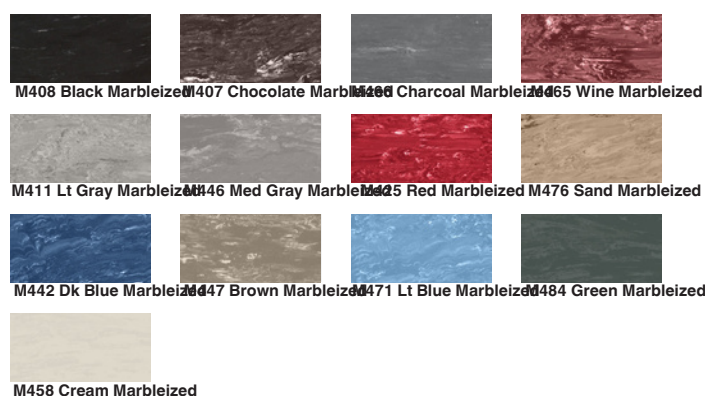
Select from standard lengths of 36", 42", 48", 54", 60", 66" or 72". Available in Plain Black only.

## RUBBER TREADS, RISERS, AND TILE COLOR CHART

### Solid Colors



### Marbleized Colors

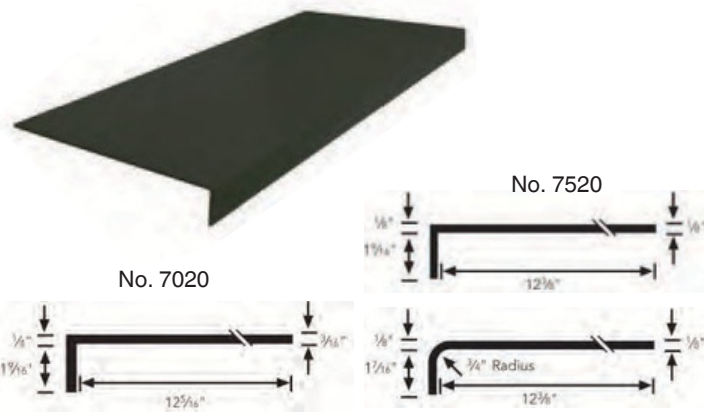


Product colors are reproduced as accurately as possible. Make final color selection from actual samples.



## SMOOTH RUBBER TREADS • COVE RISERS • LANDING TILE

### SMOOTH FLAT SURFACE TREADS



No. 7520 is a smooth rubber stair tread for light commercial use. No. 7520 is 12-3/8" deep with either a 1-9/16" long square nose or 1-7/16" long curve nose. No. 7520 treads are available with 2-3/4" abrasive strips (No. 220) or a single 2" abrasive strip (No. 2520VI); abrasive strips are available in Black (standard), Safety Yellow, Beige, Gray or Brown.

No. 7020 is a smooth rubber stair tread for use in commercial, industrial or institutional buildings. No. 7020 is 12-5/16" deep with a 1-9/16" long square nose only. No. 7020 treads are available with 2-3/4" abrasive strips (No. 2020) or a single 2" abrasive strip (No. 2020VI); abrasive strips are available in Black (standard), Safety Yellow, Beige, Gray or Brown.

Select from standard lengths of 36", 42", 48", 54", 60", 66" or 72" for both styles. Choose from standard marbled and solid colors as shown on page 3.

### No. 605CR COVED STAIR RISER



Complete the job by using our No. 605CR Cove Risers. Allows easier cleaning, is more attractive and reduces fitting procedures at the rear of the steps. Can be trimmed to fit in height and length.

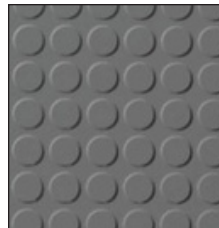
Select from standard lengths of 36", 42", 48", 54", 60", 66", 72", 78", 84", 90", 96", 102" or 108". Choose from standard marbled and solid colors as shown on page 3.

### No. 644 DIAMOND DESIGN TILE (27" x 27")



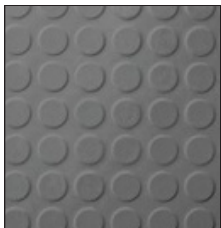
An ideal tile for stairlandings, lobbies, aisles, ramps, elevators, and entryways. Diamond design pattern matches diamond design treads in color and pattern. Tiles are 3/16" thick x 27" x 27". Choose from standard marbled and solid colors as shown on page 3.

### No. 782 HI-PROFILE DISC TILE (19.68" x 19.68")



An ideal tile for stair landings, lobbies, aisles, ramps, elevators, and entryways. High-profile disc design pattern matches high-profile disc design treads in color and pattern. Tiles are 1/8" thick x 19.68" x 19.68". Choose from standard marbled and solid colors as shown on page 3.

### No. 882 LOW-PROFILE DISC TILE (19.68" x 19.68")



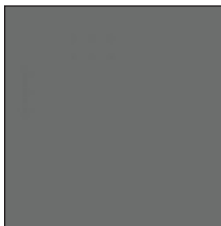
An ideal tile for stair landings, lobbies, aisles, ramps, elevators, and entryways. Low-profile disc design pattern matches low-profile disc design treads in color and pattern. Tiles are 1/8" thick x 19.68" x 19.68". Choose from standard marbled and solid colors as shown on page 3.

### No. 552 SQUARE DESIGN TILE (19.68" x 19.68")



An ideal tile for stair landings, lobbies, aisles, ramps, elevators, and entryways. Square design pattern matches square design treads in color and pattern. Tiles are 1/8" thick x 19.68" x 19.68". Choose from standard marbled and solid colors as shown on page 3.

### No. 1001T SMOOTH TILE (12" x 12")



Top quality smooth rubber floor tile; offers the durable, resilient, long-wearing, easy maintenance of rubber flooring. Tiles are 1/8" thick x 12" x 12". Choose from standard marbled and solid colors as shown on page 3.

### ADHESIVES

We carry a complete line of adhesives and nose caulks for installation of our stair treads, risers and tile.

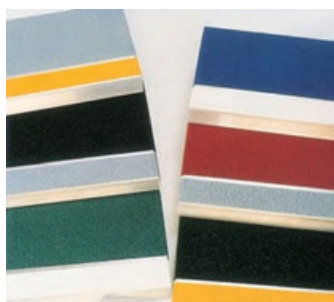
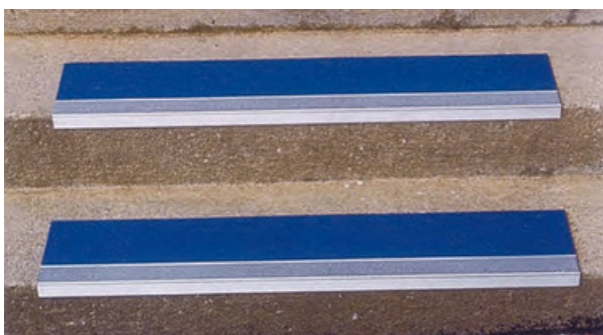
Rubber and vinyl stair treads and cove risers can be installed with our

No. RCM510 Acrylic Adhesive, No. 400 Neoprene Contact Adhesive or No. 300 Water-Based Contact Adhesive (No. 630D Rubber Outdoor Treads must be installed with our No. 775 Epoxy Adhesive). Landing tiles can be installed with our RCM510 Acrylic Adhesive or No. 775 Epoxy Adhesive.

Vinyl treads for commercial applications should also be installed using our No. 110 Epoxy Nose Caulk with our ECD18 or ECD26 Dual-Cartridge

## GRIT-SURFACE ALUMINUM TREADS • GRIT COATED FIBERGLASS TREADS

### GRIT-SURFACE ALUMINUM STAIR TREADS



Seven Standard Colors available:

Black, Brown, Blue, Gray,  
Green, Red, Yellow

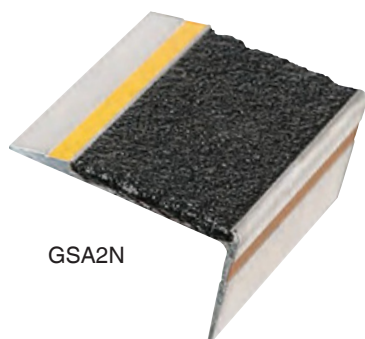
Install OUTDOORS or INDOORS on concrete, wood, treated lumber, slate or marble steps. Use for hotels, motels, schools, apartments, condos, hospitals, churches, cruise ships, amusement parks, etc. Offers anti-slip safety surface – protect new steps – renovate slippery, worn steps.

Diamond hard aluminum oxide abrasives combined with "space-age" polymeric binders are bonded to a heat treated high strength aluminum square nose stair tread. Treads are available 7-1/2", 9" or 11" deep; in one or two contrasting colors per tread. Flat pieces, 3-1/2" or 5-1/2" deep, can be used for ramps and other non-step applications or as a filler behind the 7-1/2" treads. Select one color for front insert and the same or a different color for back insert from seven standard abrasive colors of black, brown, blue, gray, green, red or yellow.

3-1/2" & 5-1/2" deep flat one color filler strips are available to butt to back of stair treads for deeper coverage or for use on flat surface or ramp installations.

**Specifications:** Furnish and install Musson Grit-Surface Aluminum Stair Treads, 3/16" thick; 7-1/2" (GSA75), 9" (GSA9) or 11" (GSA11) deep, as shown on drawings. Tread surface shall have aluminum oxide abrasives permanently bonded to a heat treated aluminum square nose tread. Select colors from standard grit colors of black, brown, blue, gray, green, red or yellow. Treads can be supplied with two countersunk holes every 12" for screw-down installation, or without holes for installation with our #400 Neoprene Contact Cement or #775 Epoxy Adhesive.

### GRIT-SURFACE ALUMINUM NOSING

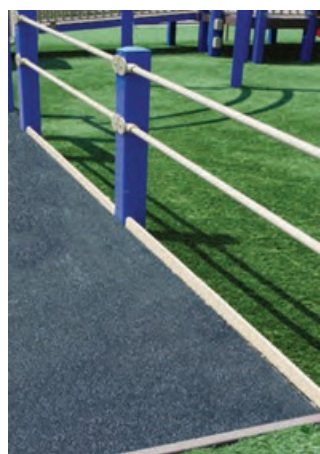


GSA2N

The GSA2N style is made from the same material as our Grit-Surface Aluminum Treads. The nosing is 2-1/2" deep with a 1-1/4" nose. The top surface has a 1-3/4" wide abrasive finish (available in Black, Brown, Blue, Gray, Green, Red or Yellow) with a 3/4" tapered aluminum back edge. Both the nose and tapered edge have a 1/4" wide reflective yellow strip for additional safety.

GSA2N is available solid (for glue-down applications) or with countersunk holes (for screw down applications) every 12".

### GRIT-SURFACE FIBERGLASS STEP COVERS / PANELS



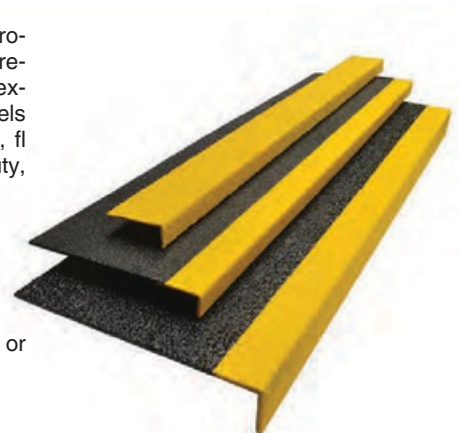
Grit-Surface Step Cover & Walkway Panels are coated with a proprietary blend of mineral abrasive epoxy grit and provide slip resistance, durability and a permanent anti-slip solution to both exterior and interior applications. Fiberglass step covers and panels are lightweight and ideal for use on structurally sound inclines, floors and steps in three distinct grit coating options: Heavy Duty, Medium and Fine. Can be provided with or without holes.

**STEP COVERS** – in Black, Yellow or Black with Yellow nose  
FSC3 – 3" deep with 1" square nose .9 lbs. each  
FSC9 – 9" deep with 1" square nose 1.5 lbs. each  
FSC11 – 11-3/4" deep with 2" square nose 2.3 lbs. each  
(FSC3 available in single color only) **FLAT PANELS** – in Black or

Yellow

GSFP CUST – Custom cut up to 48" x 96"

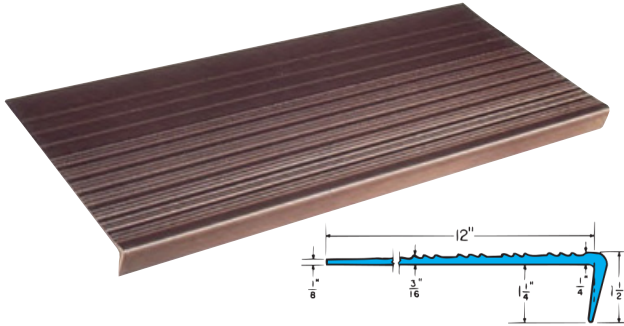
1.8 lbs/SF



# VINYL STAIR TREADS

For commercial, industrial or institutional use. All Vinyl Stair Treads meet Federal Specs. ZZ-T-001237 (GSA-FSS).

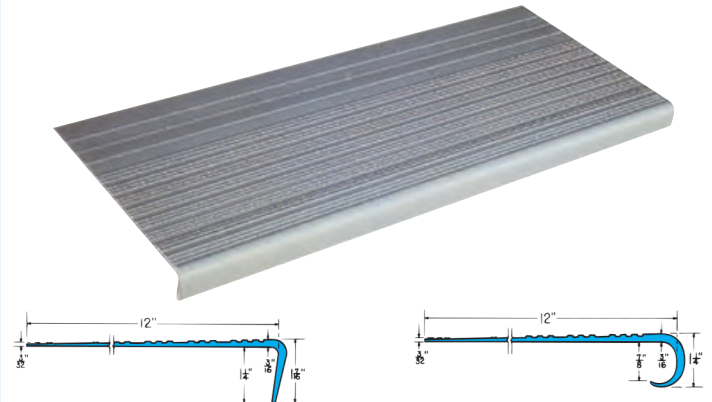
## No. 400



Heavy gauge sharp-rib design vinyl tread for heaviest traffic; 1/4" thick at wear area, easily trimmed to cover and fit any stair step. Install over concrete, metal, wood, terrazzo. Extra heavy thickness at the front "wear area". Meets Fed. Specs. RR-T-650E Type B.

**Specifications:** Furnish and install No. 400 vinyl rib design stair treads by Musson Rubber; 1/4" thick, 12" deep; 1-1/4" square nose; contain no asbestos fiber; made of first quality homogenous vinyl, color throughout thickness; free from imperfections which might lessen serviceability. Select standard length of 24", 30", 36", 42", 48", 54", 60", 72", 84" or 96". Select standard solid color of Brown, Sand, Gray or Black.

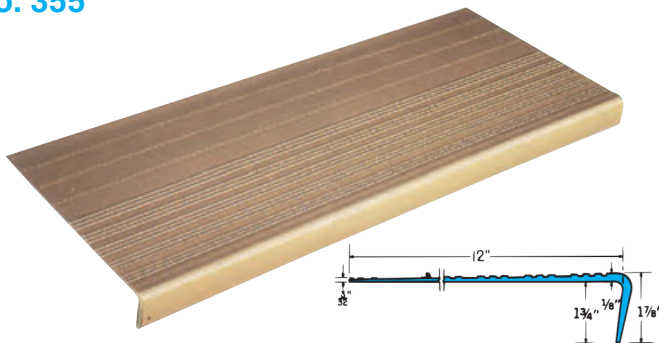
## No. 375



Designed for use in apartments, urban renewal housing, housing for the elderly and housing projects. Lower initial cost, ease of installation and cleaning, and long service appeals to owner and builder. Extra thick at front; Meets Fed. Specs. RR-T-650E Type B.

**Specifications:** Furnish and install No. 375 vinyl rib design stair treads by Musson Rubber; 3/16" thick, 12" deep, 1-1/4" square (or curved) nose; contain no asbestos fiber; made of first quality homogenous vinyl, color throughout thickness; free from imperfections which might lessen serviceability. Select standard length of 18", 24", 30", 36", 42", 48", 54", 60", 72", 84" or 96". Select standard solid color of Brown, Sand, Gray, or Black.

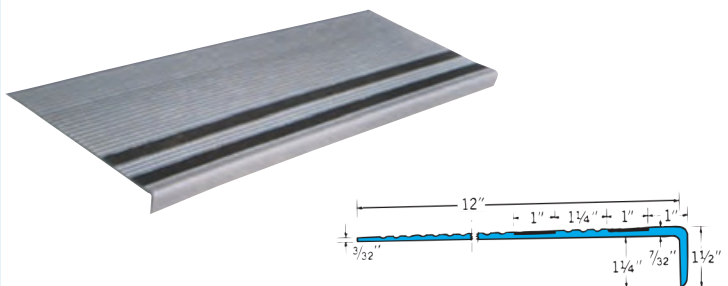
## No. 355



Lower cost production for multi-family dwellings, apartment houses, low income housing. This tread with extra long nose is designed to use on a 2" x 12" plank step or molded concrete step. Heavier thickness at front "wear area". Treads are easy to install; flat rib surface is easy to clean. Meets Fed. Specs. RR-T-650E Type B.

**Specifications:** Furnish and install No. 355 vinyl rib design stair treads by Musson Rubber; 1/8" thick, 12" deep, with 1-3/4" extra long square nose; contain no asbestos fiber; made of first quality homogenous vinyl, color throughout thickness; free from imperfections which might lessen serviceability. Select standard length of 18", 24", 30", 36", 42", 48", 54", 60", 72", 84" or 96". Select standard solid color of Brown, Sand, Gray or Black.

## No. GS365 GRIT-STRIP VINYL



The economical, nonporous, abrasion resistance and easy cleaning features of vinyl are now combined with the safety features of "Grit-Strips" into one stair tread. Can be used in all but the heaviest traffic areas. Meets Federal Specs. RR-T-650E Type B.

**Specifications:** Furnish and install No. GS365 Vinyl Grit-Strip rib design stair treads by Musson Rubber; 7/32" thick, 12" deep; 1-1/4" square nose; two black\* 1" wide abrasive Grit-Strips inlaid in tread, 1" from front edge, spaced 1-1/4" apart; contains no asbestos fiber; made of first quality homogenous vinyl, color throughout thickness; free from imperfections which might lessen serviceability. Select standard length of 36", 42", 48", 54", 60", 72", 84" or 96". Select standard solid color of Brown or Gray. (Grit Strip also available in Gray, Brown, Beige, Safety Yellow & Safety Red)

VINYL  
COLORS  
for treads &  
risers only



BROWN



SAND



GRAY



BLACK

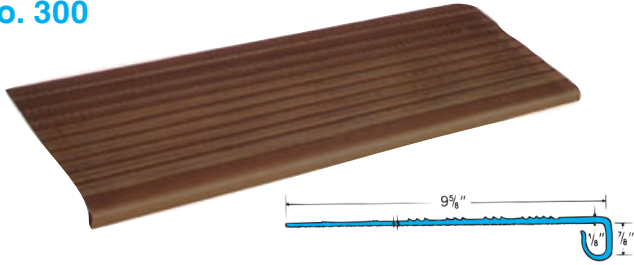
All vinyl treads and risers can be installed with our No. 400 Neoprene Contact Adhesive, No. 300 Water-Based Adhesive, No. RCM510 Acrylic Adhesive or No. AT620-4 adhesive tape.

Product colors are reproduced as accurately as possible. Make final color selection from actual samples.



## VINYL STAIR TREADS • COVE RISERS • TILE • NOSING

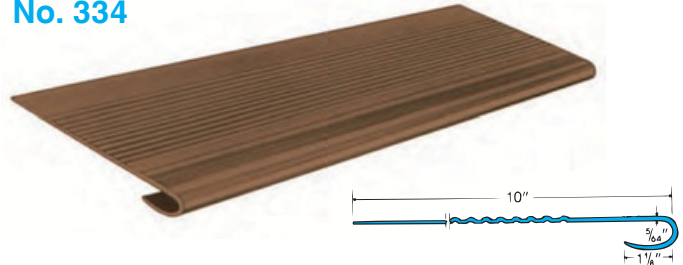
### No. 300



Lowest cost protection for stairs of homes, duplexes and apartments. Features extra heavy snap-on nose that fits either square or curved nose wood steps that are between 3/4" and 1-1/8" thick.

**Specifications:** Furnish and install Musson #300 vinyl rib design stair treads, 1/8" thick, 9-5/8" deep in standard sizes as needed: 18", 24", 30", 36", 42", 48" or 72" wide. Select standard color of Brown or Black.

### No. 334



Lightweight, economy gauge with a round rib design; curve-around nose fits round or square nose steps. Intended for residential use. Available in either Black or Brown; 5/64" thick, 10" deep in standard sizes of 18", 24", 36", 48", or 72" wide. Select standard color of Brown or Black.

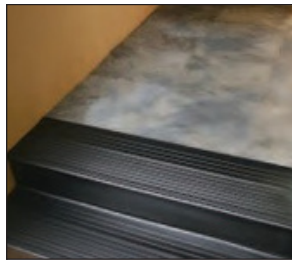
### No. 405CR COVE STAIR RISERS



Plain color cove risers match vinyl stair treads; or use a contrasting color riser with vinyl treads; easily trimmed in height and length; savings in installation are substantial; cove risers are same sizes as stair treads.

**Specifications:** Furnish and install No 405CR vinyl coved stair riser by Musson Rubber; 1/8" thick, 7" high with 5/8" toe; ribbed back. Select standard length of 18", 24", 30", 36", 42", 48", 54", 60", 72", 84" or 96". Select standard solid color of Brown, Sand, Gray or Black.

### VINYL LANDING TILES



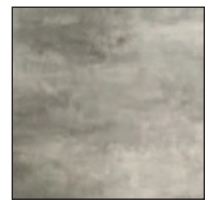
1/8" x 18" x 18" Granite Pattern tiles for use with our vinyl stair treads on landings and hallways. Available in Blackstone (for use with Black treads), Graystone (for use with Gray treads) and Brownstone (for use with Brown and Sand treads). Tile colors contrast with treads and risers to complete the staircase.



Blackstone



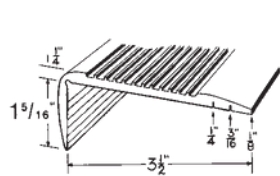
Brownstone



Graystone

Product colors are reproduced as accurately as possible. Make final color selection from actual samples.

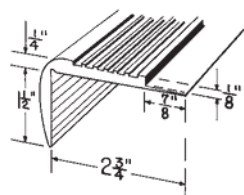
### No. 101 VINYL BUTT TYPE NOSING



Ribbed Vinyl butt-type nosing for front edge of landings, stages, bowling lanes steps, platform-like floors and bar foot rests. Grooved cutting guides on back provide "cut-offs" to match flooring thickness. Standard 8' lengths; easily cut to size. Install with No. 400 Neoprene Contact Adhesive or No. 300 Water-Based Adhesive.

Available in Black or Brown. 3-1/2" deep with 1-5/16" long nose; cut nosing at proper guide to butt against 1/8" (or 3/16" or 1/4") flooring.

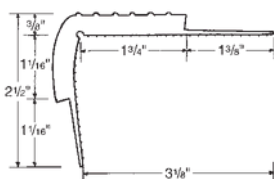
### No. 105 VINYL LAP TYPE NOSING



Ribbed Vinyl lap-type nosing for front edge of landings, stages, bowling lanes steps, platform-like floors and bar foot rests. Form fitting adjusta-nose; has a 7/8" lip to allow 1/8" flooring to lap over the back edge. Standard 8' lengths; install with No. 400 Neoprene Contact Adhesive or No. 300 Water-Based Adhesive.

Available in Black or Brown. 2-3/4" deep with 1-1/2" long nose.

### No. 140 VINYL CARPET NOSING



Improve safety and prevent worn carpet edges on steps; for new or renovated work. Butt 5/16" to 3/8" thick carpet against both the top and bottom lips of butt-type carpet nosing. Standard 8' lengths; easily cut to shorter lengths. Install with No. 400 Neoprene Contact Adhesive or No. 300 Water-Based Adhesive.

Available in Black or Brown. 3-1/8" deep; 2-1/2" nose depth; square adjusta-nose design.