



## CourtEdge™ Reducer Ramps

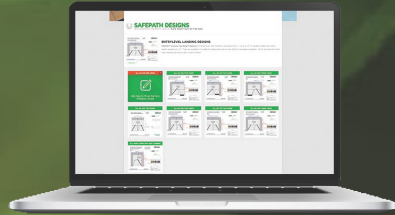
### Site Applications





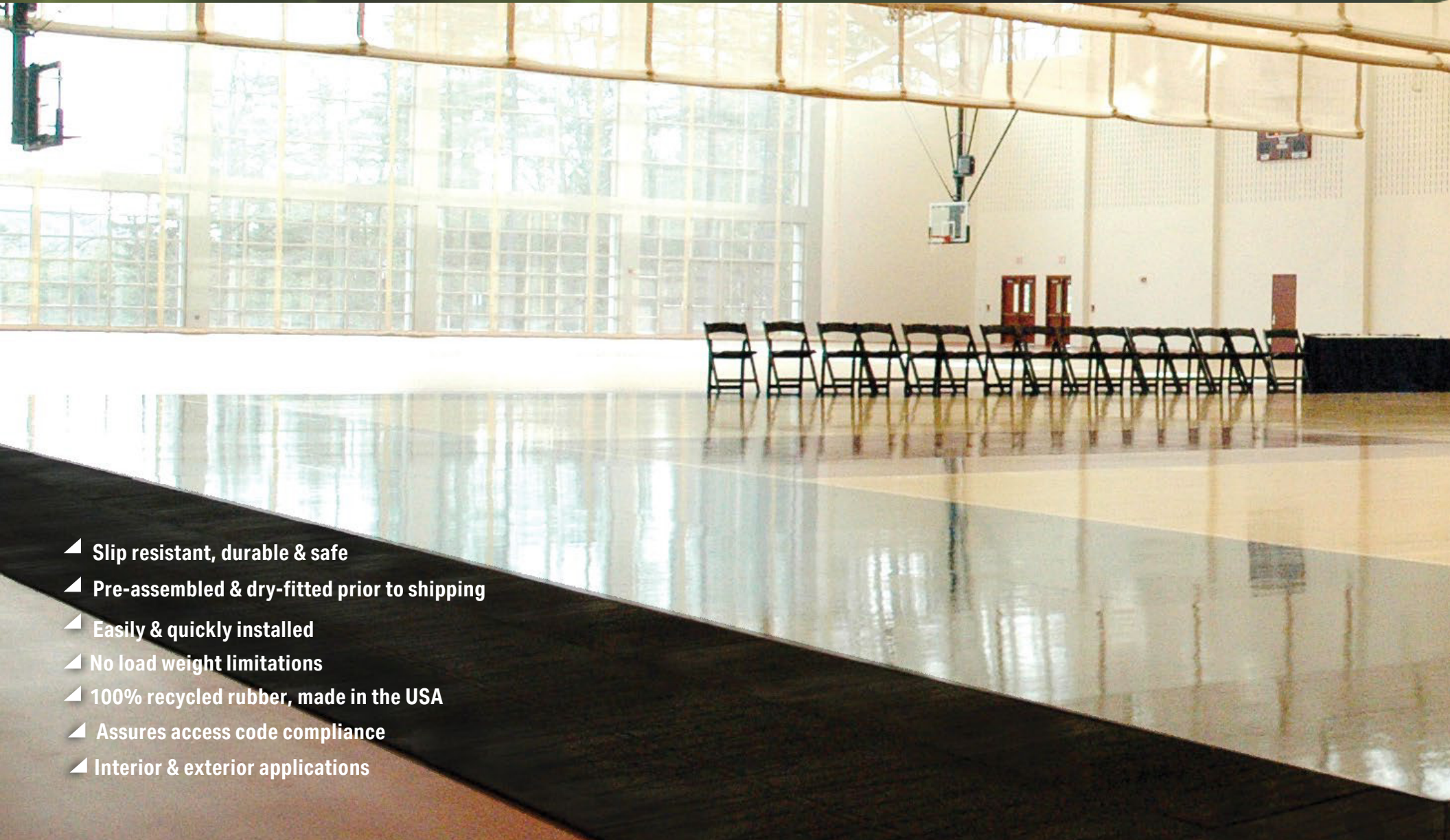
**REQUEST YOUR QUOTE ONLINE!**

[www.SafePathProducts.com/designs](http://www.SafePathProducts.com/designs)



# CourtEdge™ Reducer Ramps

- ▲ Slip resistant, durable & safe
- ▲ Pre-assembled & dry-fitted prior to shipping
- ▲ Easily & quickly installed
- ▲ No load weight limitations
- ▲ 100% recycled rubber, made in the USA
- ▲ Assures access code compliance
- ▲ Interior & exterior applications




## CourtEdge™ Reducer Ramps

### PROBLEM:

New sport floors are often placed on top of existing floors, or a more robust floor is installed, creating vertical barriers. This gymnasium had a new basketball court installed which created a 2-1/2" rise around the whole court, which made it non-compliant, not to mention dangerous.

### SOLUTION:

SafePath's CourtEdge Reducer 1200's (2-1/2" high) were wrapped around the court, eliminating the barrier, creating a gradual rise and making it ADA compliant and ready to use!



*"The world's largest selection of recycled rubber transitions; each project is hand crafted and custom cut to fit."*





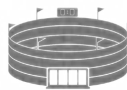
## SCHOOLS & PARKS

Reducers surround a synthetic turf installed on top of an asphalt playground to create a football field.



## GYMNASIUMS

Reducers are used in doorways and to surround new and old flooring for compliance and accessibility.



## STADIUMS

Reducers are used to surround the fields, at doorways and other areas removing vertical barriers.



## CourtEdge™ Reducer Ramps

### REDUCER 200

1/2" x 3 1/4" x 32"

No Pattern



### REDUCER 300

3/4" x 7" x 36"

No Pattern



### REDUCER 400

7/8" x 8" x 36"

No Pattern



### REDUCER 500

1" x 10" x 36"

Brick Pattern



### REDUCER 600

1 1/4" x 13 1/2" x 36"

Brick Pattern



### REDUCER 700

1 1/2" x 18" x 36"

Brick Pattern



### REDUCER 800

1 3/4" x 21 1/2" x 36"

Brick Pattern



### REDUCER 850

2" x 23 1/2" x 48"

Brick Pattern



### REDUCER 900

2" x 23 1/4" x 30"

Diamond Pattern



### REDUCER 1000

2 1/4" x 26 1/4" x 30"

Diamond Pattern



### REDUCER 1200

2 1/2" x 29 3/4" x 30"

Diamond Pattern



### REDUCER 1300

1 1/2" x 29" x 29"

No Pattern



### REDUCER 1400

2 3/4" x 30" x 30"

Diamond Pattern



### REDUCER 2190

2 3/4" x 33 1/2" x 36"

Brick Pattern

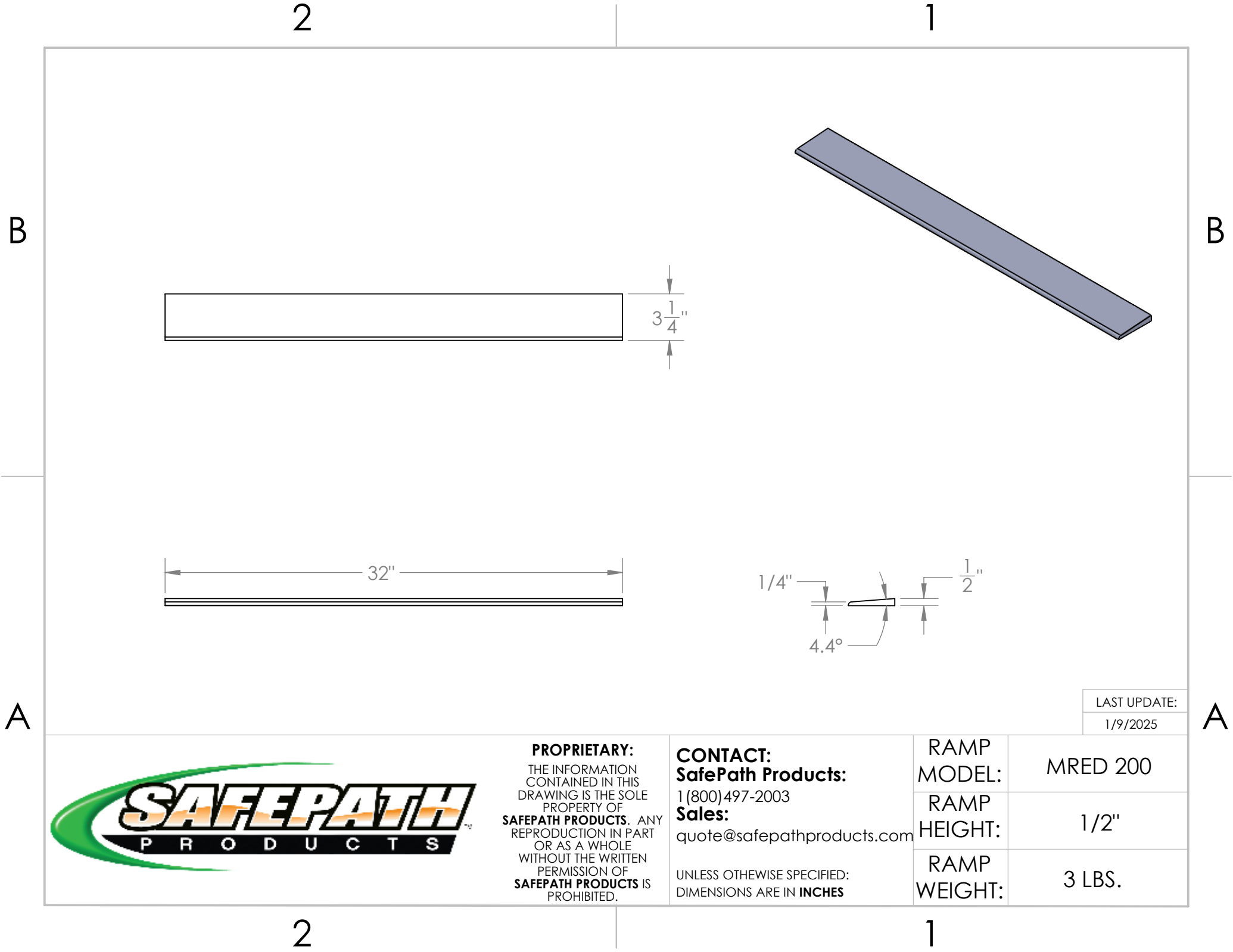


## GRIP PATTERNS VARY BY SIZE

No Pattern

Brick Pattern

Diamond Pattern



LAST UPDATE:  
1/9/2025

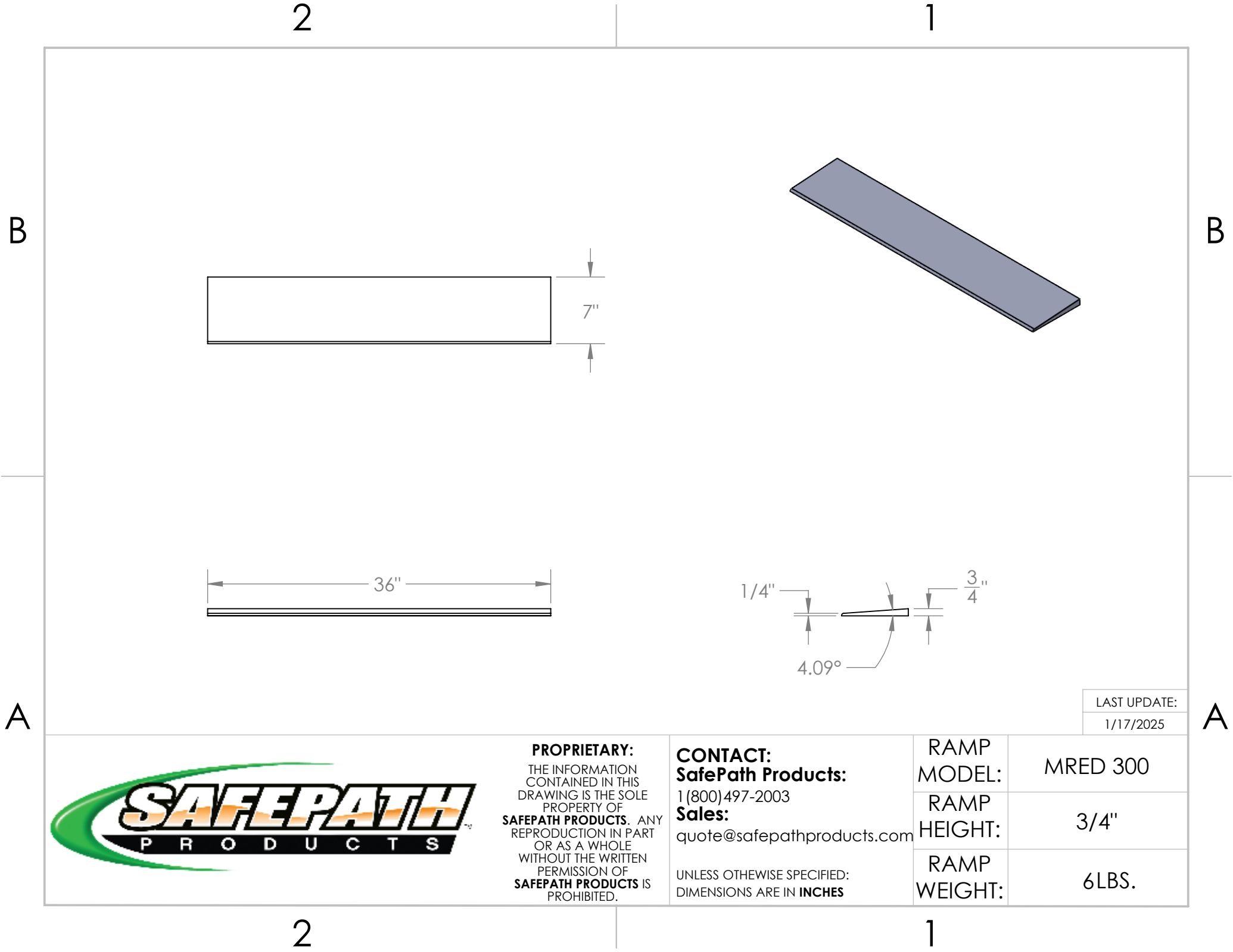


**PROPRIETARY:**  
THE INFORMATION  
CONTAINED IN THIS  
DRAWING IS THE SOLE  
PROPERTY OF  
**SAFEPath PRODUCTS.** ANY  
REPRODUCTION IN PART  
OR AS A WHOLE  
WITHOUT THE WRITTEN  
PERMISSION OF  
**SAFEPath PRODUCTS** IS  
PROHIBITED.

**CONTACT:**  
**SafePath Products:**  
1 (800) 497-2003  
**Sales:**  
quote@safepathproducts.com

UNLESS OTHERWISE SPECIFIED:  
DIMENSIONS ARE IN **INCHES**

RAMP MODEL:	MRED 200
RAMP HEIGHT:	1/2"
RAMP WEIGHT:	3 LBS.



B

B

A

A

LAST UPDATE:  
1/17/2025

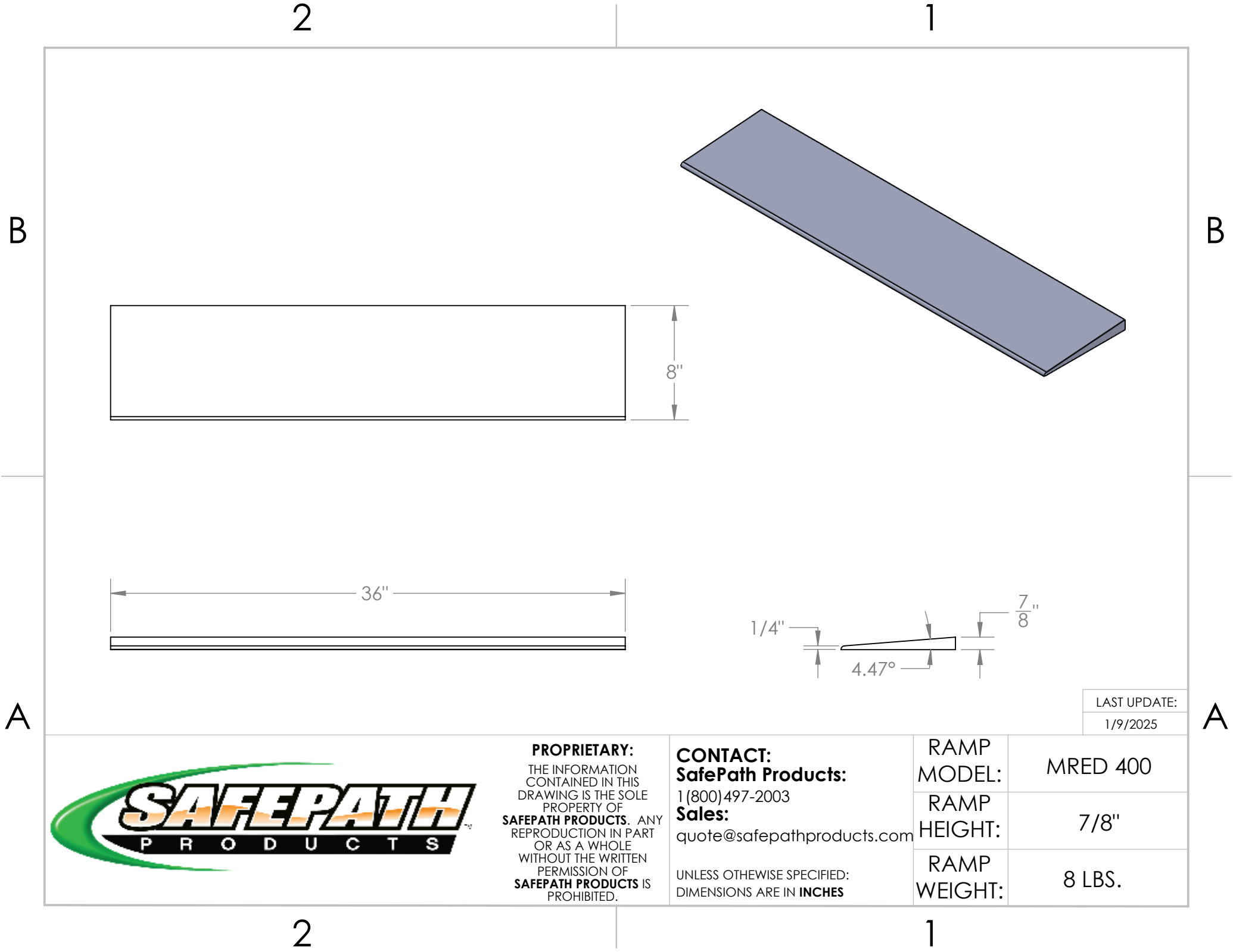


**PROPRIETARY:**  
THE INFORMATION  
CONTAINED IN THIS  
DRAWING IS THE SOLE  
PROPERTY OF  
**SAFEPath PRODUCTS.** ANY  
REPRODUCTION IN PART  
OR AS A WHOLE  
WITHOUT THE WRITTEN  
PERMISSION OF  
**SAFEPath PRODUCTS** IS  
PROHIBITED.

**CONTACT:**  
**SafePath Products:**  
1 (800) 497-2003  
**Sales:**  
quote@safepathproducts.com

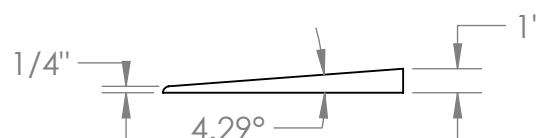
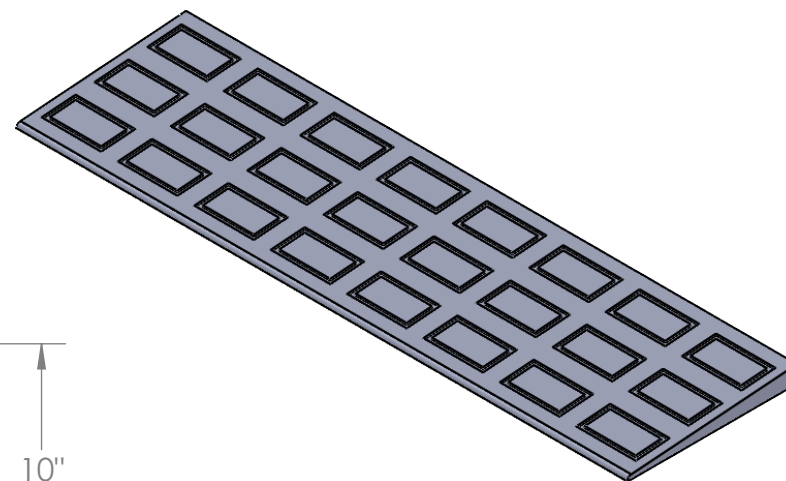
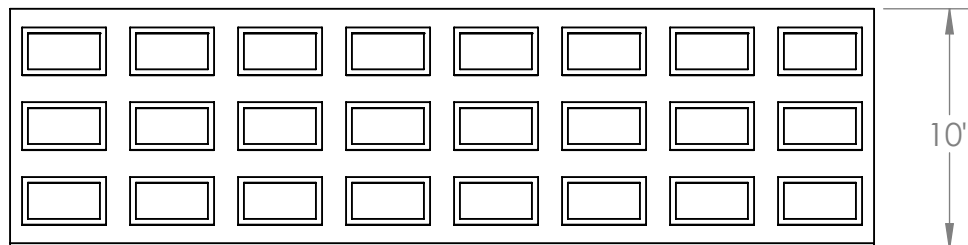
UNLESS OTHERWISE SPECIFIED:  
DIMENSIONS ARE IN **INCHES**

RAMP MODEL:	MRED 300
RAMP HEIGHT:	3/4"
RAMP WEIGHT:	6LBS.



B

B



LAST UPDATE:  
1/17/2025



**PROPRIETARY:**  
THE INFORMATION  
CONTAINED IN THIS  
DRAWING IS THE SOLE  
PROPERTY OF  
**SAFEPath PRODUCTS.** ANY  
REPRODUCTION IN PART  
OR AS A WHOLE  
WITHOUT THE WRITTEN  
PERMISSION OF  
**SAFEPath PRODUCTS** IS  
PROHIBITED.

**CONTACT:**  
**SafePath Products:**  
1 (800) 497-2003  
**Sales:**  
quote@safepathproducts.com

UNLESS OTHERWISE SPECIFIED:  
DIMENSIONS ARE IN **INCHES**

RAMP MODEL:	MRED 500
RAMP HEIGHT:	1"
RAMP WEIGHT:	10 LBS.

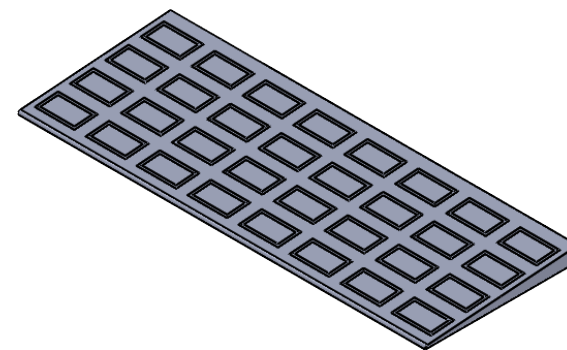
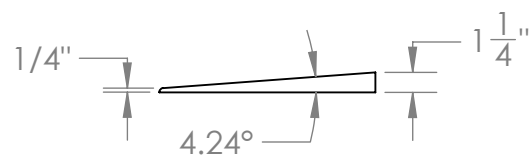
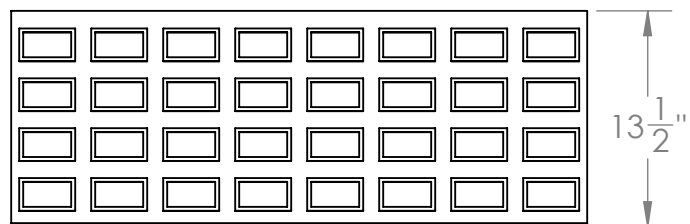
A

2

1



B



B

A



**PROPRIETARY:**  
THE INFORMATION  
CONTAINED IN THIS  
DRAWING IS THE SOLE  
PROPERTY OF  
**SAFEPath PRODUCTS.** ANY  
REPRODUCTION IN PART  
OR AS A WHOLE  
WITHOUT THE WRITTEN  
PERMISSION OF  
**SAFEPath PRODUCTS** IS  
PROHIBITED.

**CONTACT:**  
**SafePath Products:**

1 (800) 497-2003

**Sales:**

quote@safepathproducts.com

UNLESS OTHERWISE SPECIFIED:  
DIMENSIONS ARE IN **INCHES**

RAMP  
MODEL:

MRED 600

RAMP  
HEIGHT:

1 1/4"

RAMP  
WEIGHT:

17 LBS.

LAST UPDATE:

1/9/2025

A

2

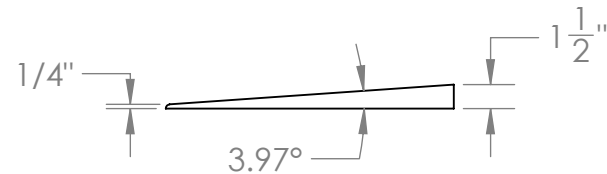
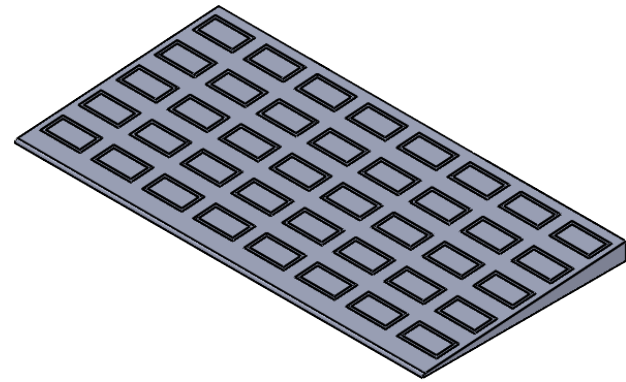
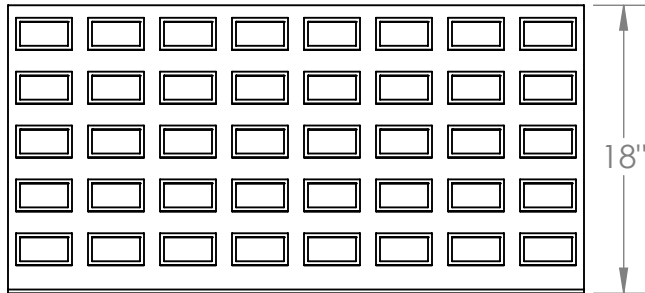
1

2

1

B

B



A

A

LAST UPDATE:  
1/9/2025



**PROPRIETARY:**  
THE INFORMATION  
CONTAINED IN THIS  
DRAWING IS THE SOLE  
PROPERTY OF  
**SAFEPath PRODUCTS.** ANY  
REPRODUCTION IN PART  
OR AS A WHOLE  
WITHOUT THE WRITTEN  
PERMISSION OF  
**SAFEPath PRODUCTS** IS  
PROHIBITED.

**CONTACT:**  
**SafePath Products:**  
1 (800) 497-2003  
**Sales:**  
quote@safepathproducts.com

UNLESS OTHERWISE SPECIFIED:  
DIMENSIONS ARE IN **INCHES**

RAMP MODEL:	MRED 700
RAMP HEIGHT:	1 1/2"
RAMP WEIGHT:	23 LBS.

2

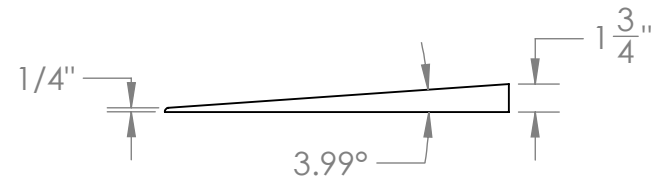
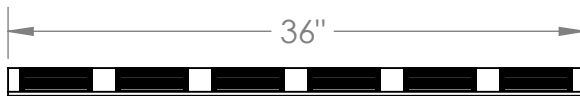
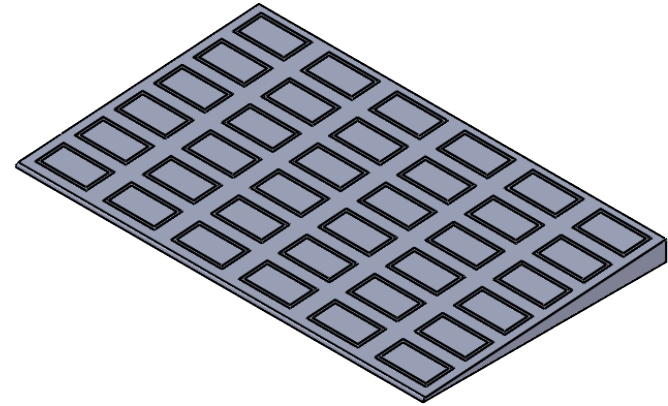
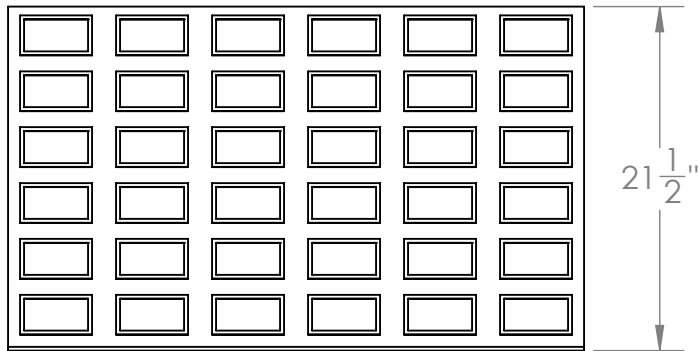
1

2

1

B

B



A

A

LAST UPDATE:  
1/9/2025



**PROPRIETARY:**  
THE INFORMATION  
CONTAINED IN THIS  
DRAWING IS THE SOLE  
PROPERTY OF  
**SAFEPath PRODUCTS.** ANY  
REPRODUCTION IN PART  
OR AS A WHOLE  
WITHOUT THE WRITTEN  
PERMISSION OF  
**SAFEPath PRODUCTS** IS  
PROHIBITED.

**CONTACT:**  
**SafePath Products:**  
1 (800) 497-2003  
**Sales:**  
quote@safepathproducts.com

UNLESS OTHERWISE SPECIFIED:  
DIMENSIONS ARE IN **INCHES**

RAMP MODEL:	MRED 800
RAMP HEIGHT:	1 3/4"
RAMP WEIGHT:	30 LBS.

2

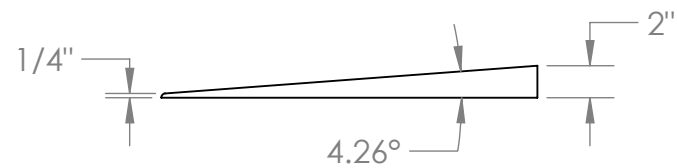
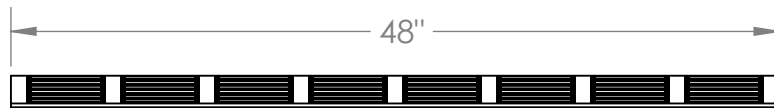
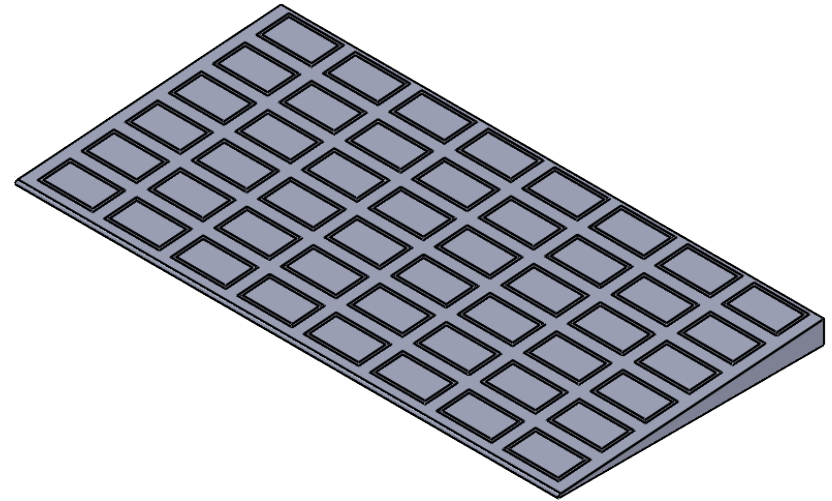
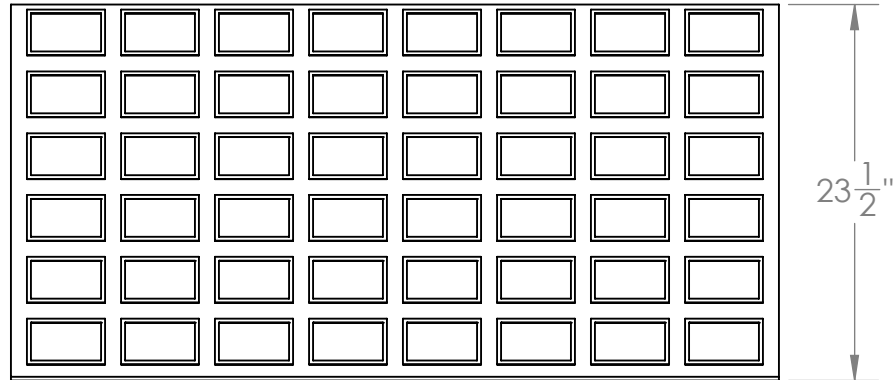
1

2

1

B

B



A

A



**PROPRIETARY:**  
THE INFORMATION  
CONTAINED IN THIS  
DRAWING IS THE SOLE  
PROPERTY OF  
**SAFEPath PRODUCTS.** ANY  
REPRODUCTION IN PART  
OR AS A WHOLE  
WITHOUT THE WRITTEN  
PERMISSION OF  
**SAFEPath PRODUCTS** IS  
PROHIBITED.

**CONTACT:**  
**SafePath Products:**  
1 (800) 497-2003  
**Sales:**  
quote@safepathproducts.com

UNLESS OTHERWISE SPECIFIED:  
DIMENSIONS ARE IN **INCHES**

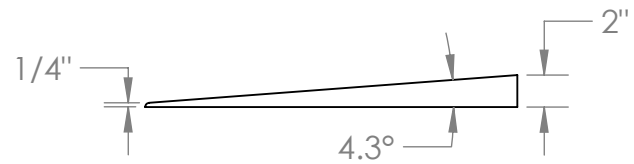
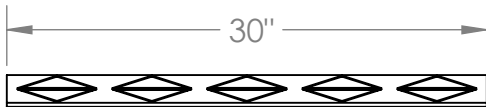
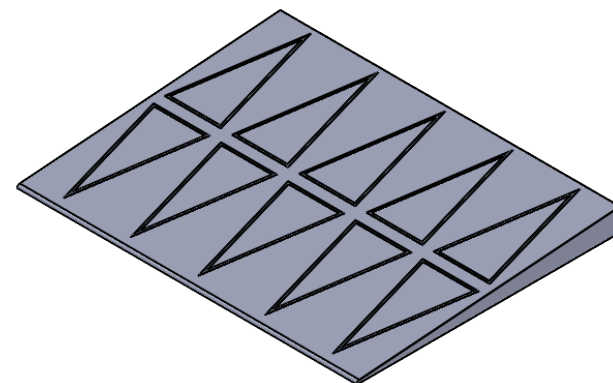
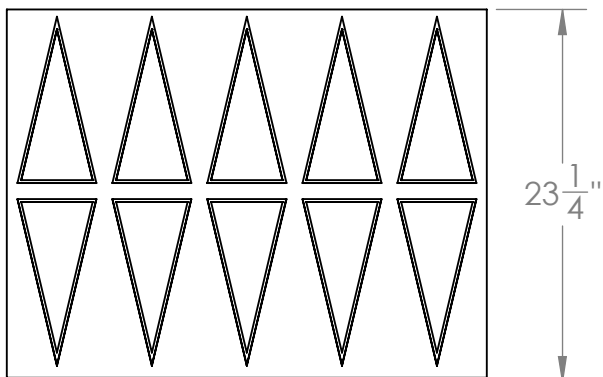
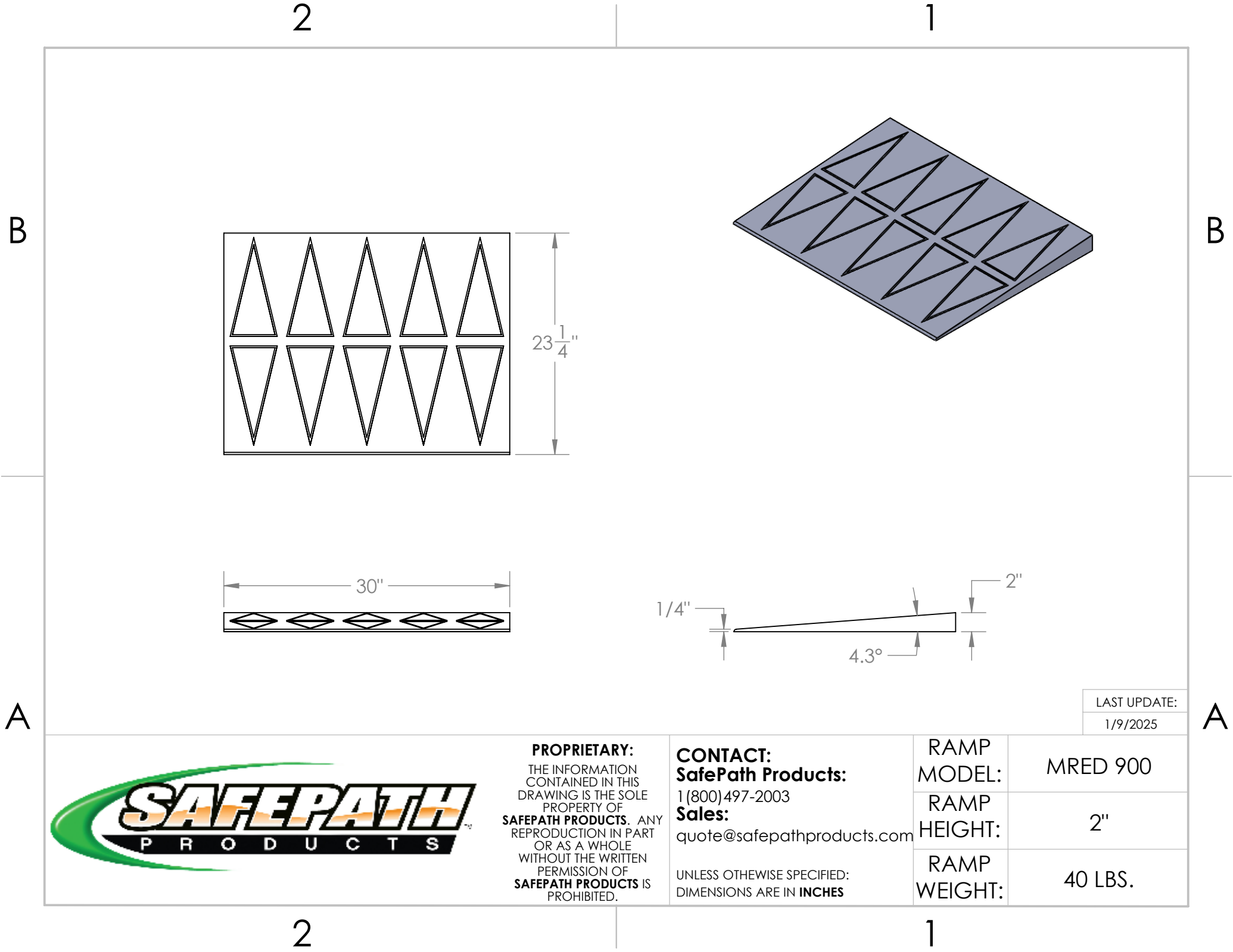
LAST UPDATE:  
1/9/2025

RAMP MODEL:	MRED 850
RAMP HEIGHT:	2"
RAMP WEIGHT:	56 LBS.

2

1





LAST UPDATE:  
1/9/2025

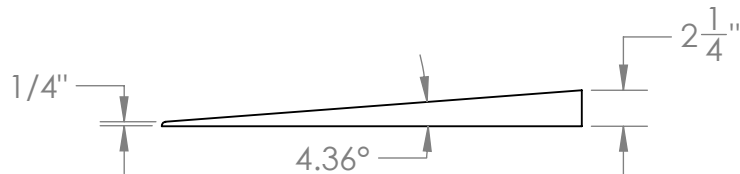
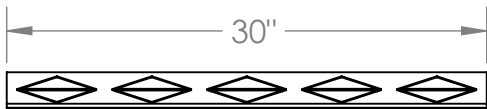
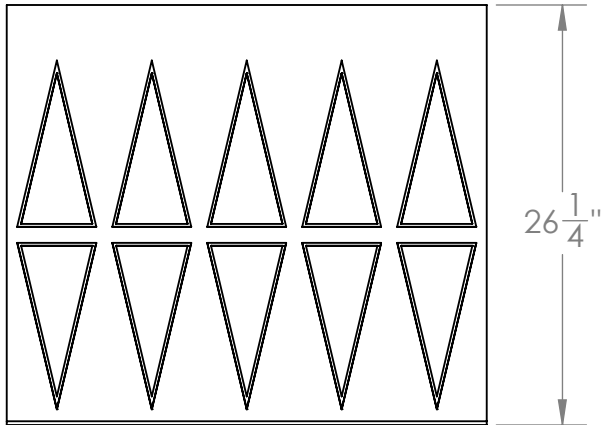
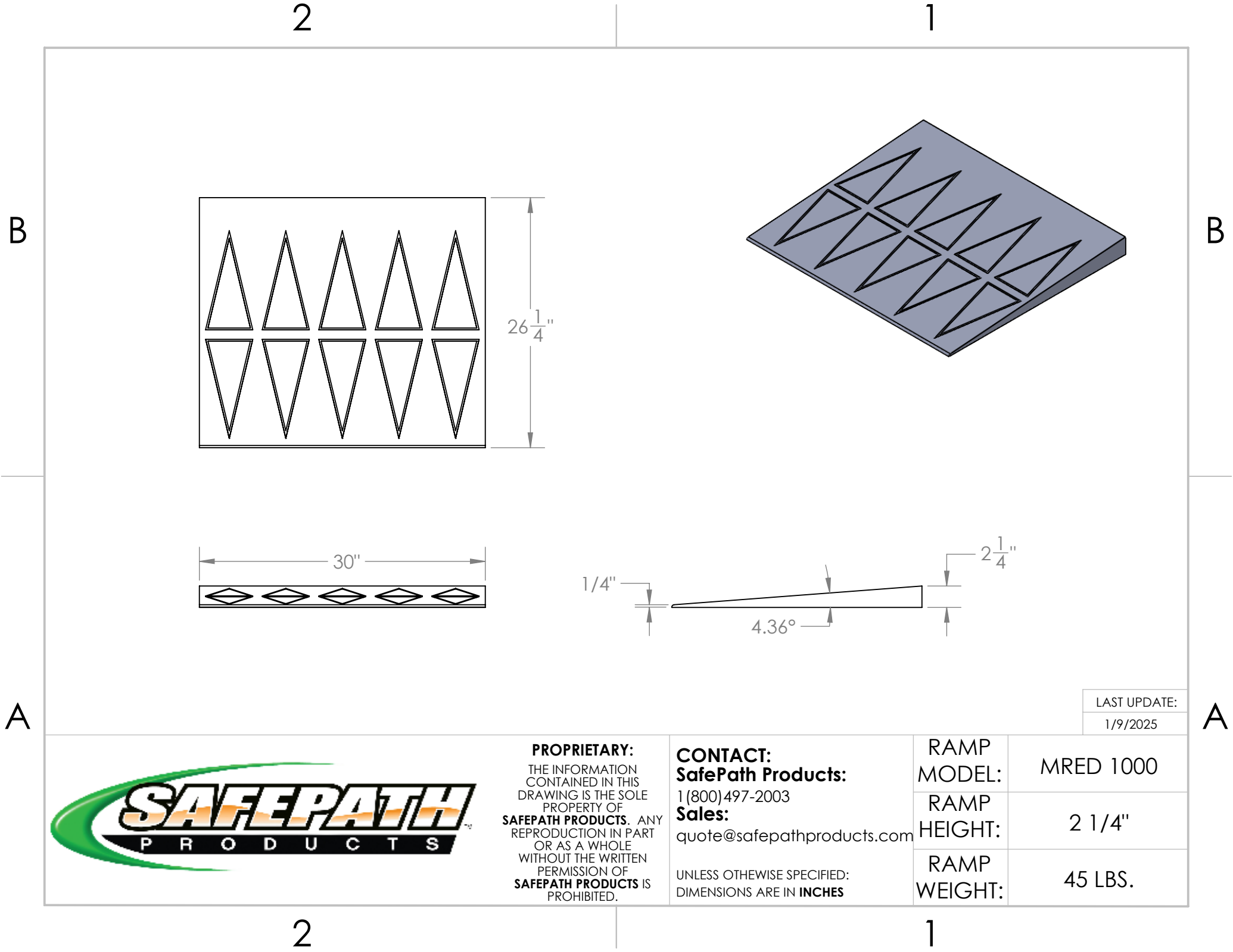


**PROPRIETARY:**  
THE INFORMATION  
CONTAINED IN THIS  
DRAWING IS THE SOLE  
PROPERTY OF  
**SAFEPath PRODUCTS.** ANY  
REPRODUCTION IN PART  
OR AS A WHOLE  
WITHOUT THE WRITTEN  
PERMISSION OF  
**SAFEPath PRODUCTS** IS  
PROHIBITED.

**CONTACT:**  
**SafePath Products:**  
1 (800) 497-2003  
**Sales:**  
quote@safepathproducts.com

UNLESS OTHERWISE SPECIFIED:  
DIMENSIONS ARE IN **INCHES**

RAMP MODEL:	MRED 900
RAMP HEIGHT:	2"
RAMP WEIGHT:	40 LBS.



LAST UPDATE:  
1/9/2025



**PROPRIETARY:**  
THE INFORMATION  
CONTAINED IN THIS  
DRAWING IS THE SOLE  
PROPERTY OF  
**SAFEPath PRODUCTS.** ANY  
REPRODUCTION IN PART  
OR AS A WHOLE  
WITHOUT THE WRITTEN  
PERMISSION OF  
**SAFEPath PRODUCTS** IS  
PROHIBITED.

**CONTACT:**  
**SafePath Products:**  
1 (800) 497-2003  
**Sales:**  
quote@safepathproducts.com

UNLESS OTHERWISE SPECIFIED:  
DIMENSIONS ARE IN **INCHES**

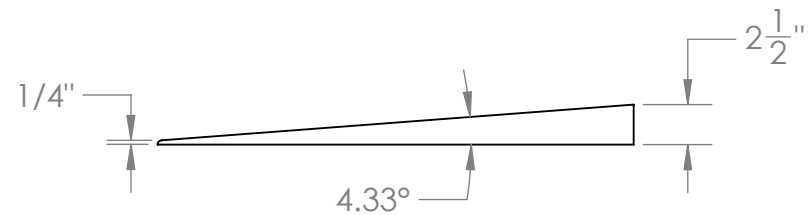
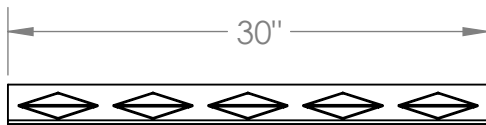
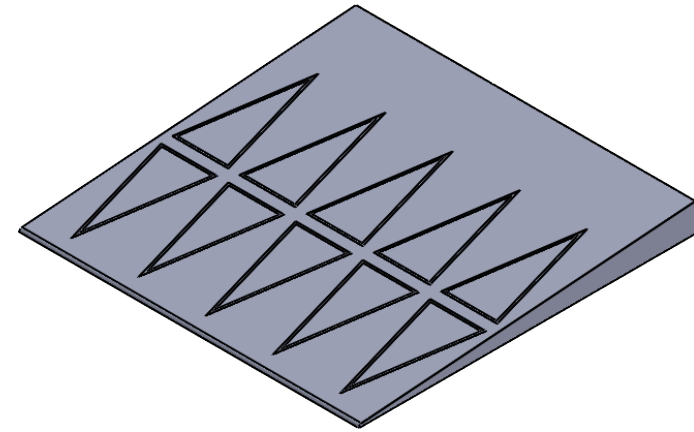
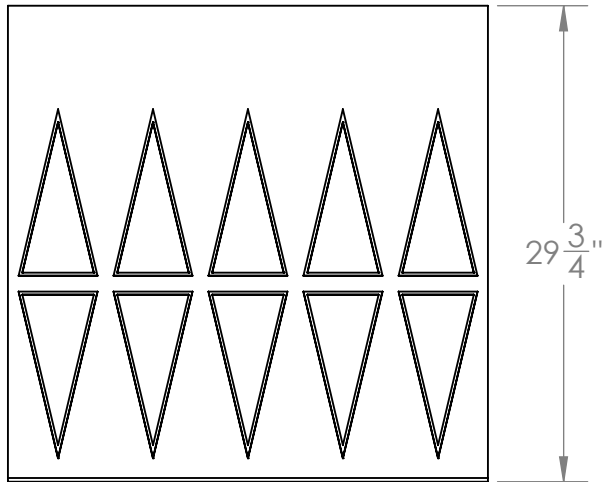
RAMP MODEL:	MRED 1000
RAMP HEIGHT:	2 1/4"
RAMP WEIGHT:	45 LBS.

2

1

B

B



A

A



**PROPRIETARY:**  
THE INFORMATION  
CONTAINED IN THIS  
DRAWING IS THE SOLE  
PROPERTY OF  
**SAFE****PATH** **PRODUCTS**. ANY  
REPRODUCTION IN PART  
OR AS A WHOLE  
WITHOUT THE WRITTEN  
PERMISSION OF  
**SAFE****PATH** **PRODUCTS** IS  
PROHIBITED.

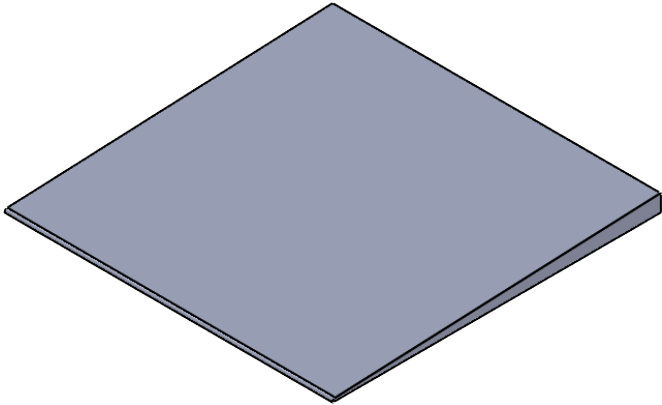
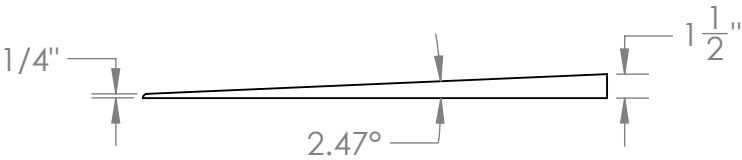
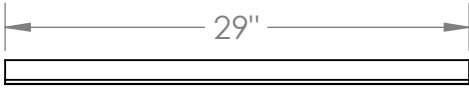
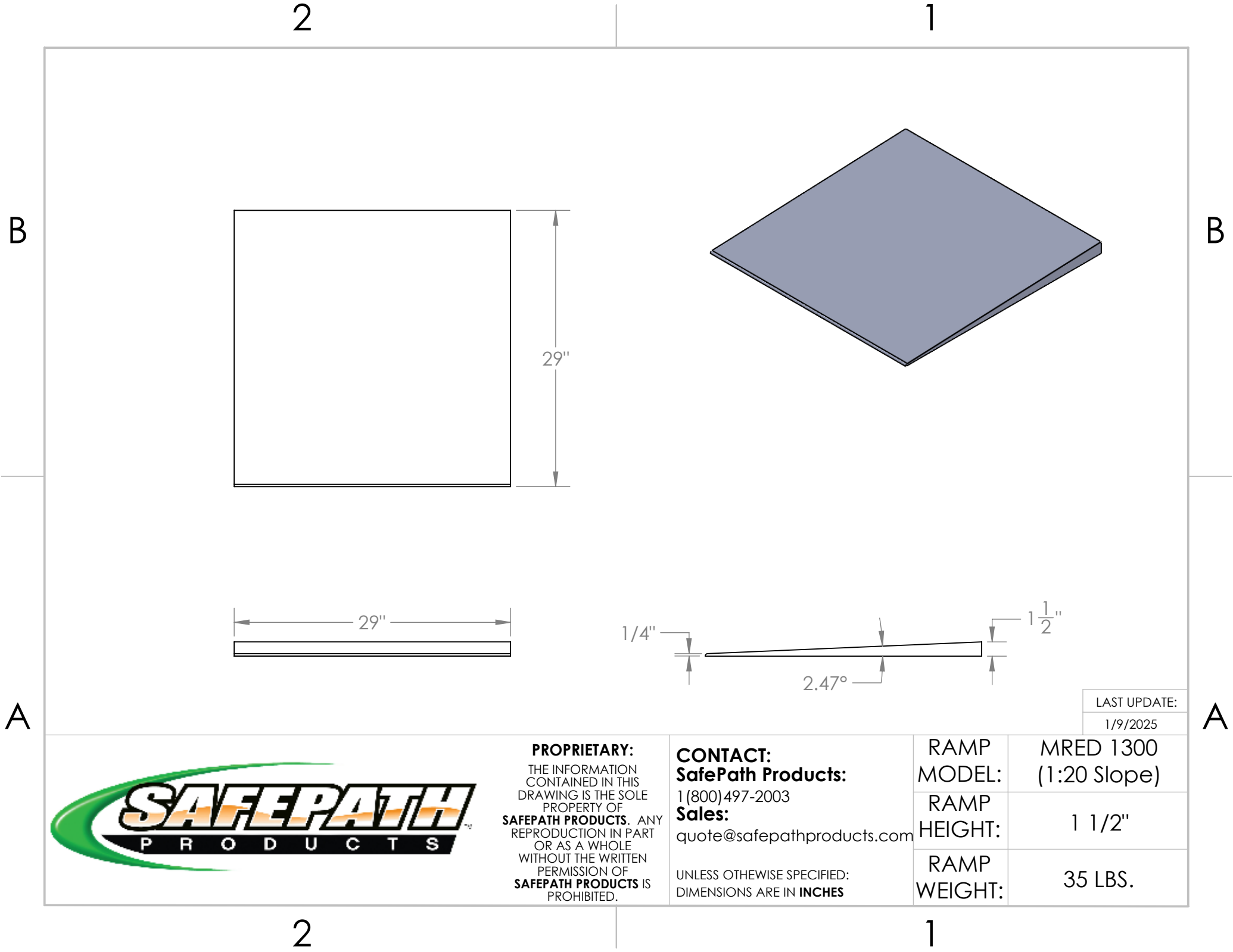
**CONTACT:**  
**SafePath Products:**  
1 (800) 497-2003  
**Sales:**  
quote@safepathproducts.com

UNLESS OTHERWISE SPECIFIED:  
DIMENSIONS ARE IN **INCHES**

LAST UPDATE: 1/9/2025	
RAMP MODEL:	MRED 1200
RAMP HEIGHT:	2 1/2"
RAMP WEIGHT:	55 LBS.

2

1



**PROPRIETARY:**  
THE INFORMATION  
CONTAINED IN THIS  
DRAWING IS THE SOLE  
PROPERTY OF  
**SAFEPath PRODUCTS.** ANY  
REPRODUCTION IN PART  
OR AS A WHOLE  
WITHOUT THE WRITTEN  
PERMISSION OF  
**SAFEPath PRODUCTS** IS  
PROHIBITED.

**CONTACT:**  
**SafePath Products:**  
1 (800) 497-2003  
**Sales:**  
quote@safepathproducts.com

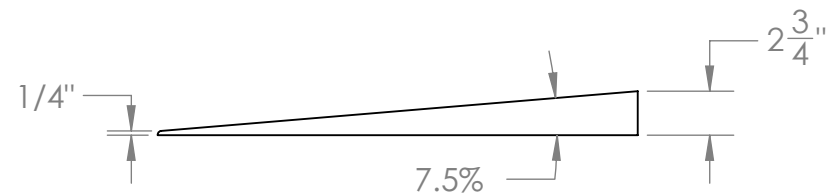
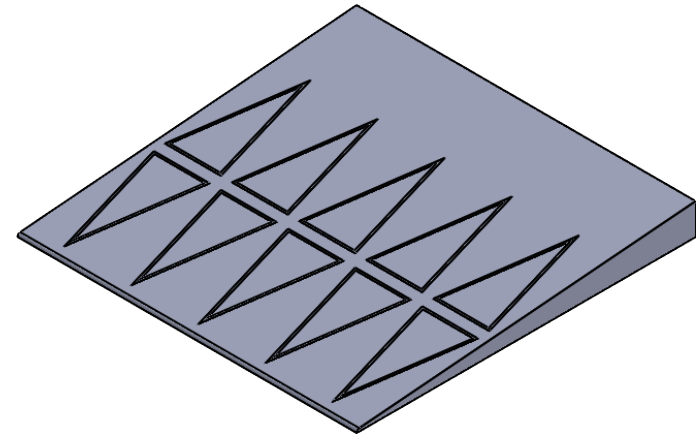
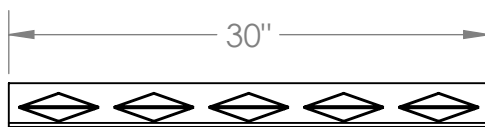
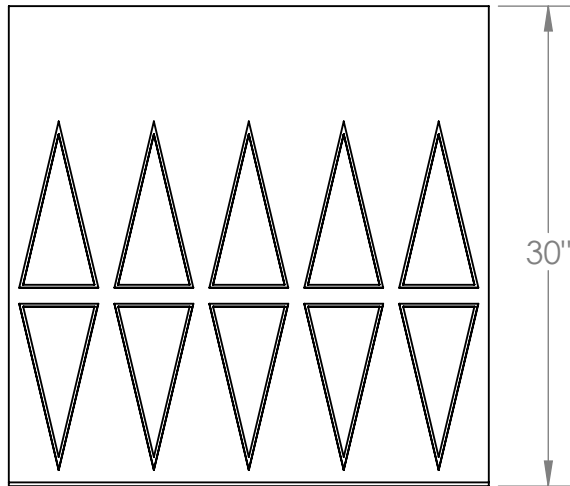
UNLESS OTHERWISE SPECIFIED:  
DIMENSIONS ARE IN **INCHES**

RAMP MODEL: RAMP HEIGHT: RAMP WEIGHT:	MRED 1300 (1:20 Slope)
	1 1/2"
	35 LBS.

LAST UPDATE:  
1/9/2025



B



LAST UPDATE:  
1/9/2025



**PROPRIETARY:**  
THE INFORMATION  
CONTAINED IN THIS  
DRAWING IS THE SOLE  
PROPERTY OF  
**SAFEPath PRODUCTS.** ANY  
REPRODUCTION IN PART  
OR AS A WHOLE  
WITHOUT THE WRITTEN  
PERMISSION OF  
**SAFEPath PRODUCTS** IS  
PROHIBITED.

**CONTACT:**  
**SafePath Products:**  
1 (800) 497-2003  
**Sales:**  
quote@safepathproducts.com

UNLESS OTHERWISE SPECIFIED:  
DIMENSIONS ARE IN **INCHES**

RAMP MODEL:	MRED 1400
RAMP HEIGHT:	2 3/4"
RAMP WEIGHT:	58 LBS.

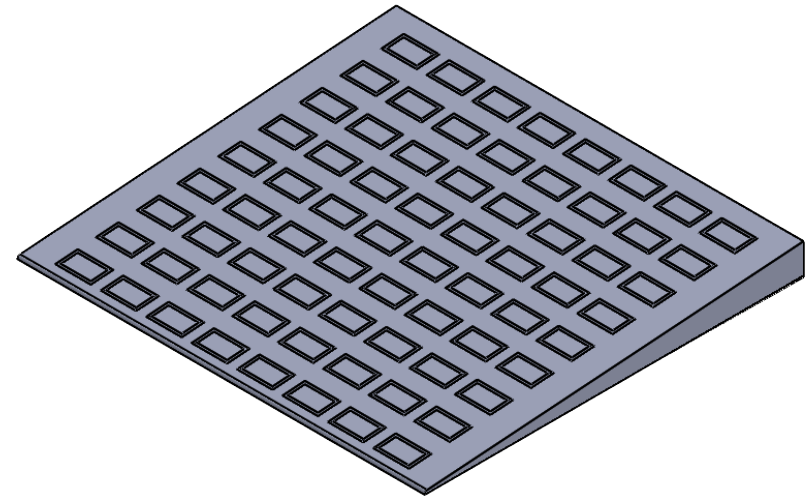
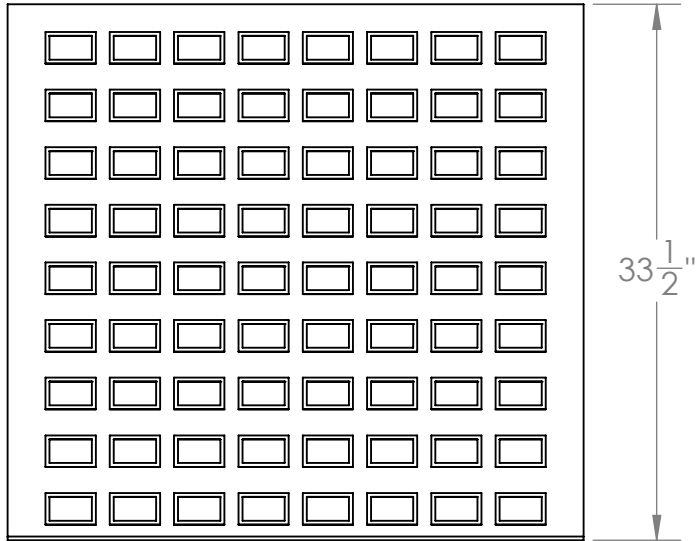
B

A

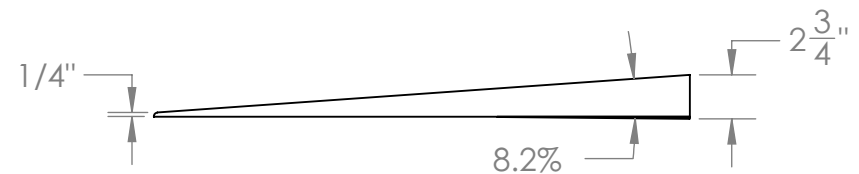
2

1

B



B



A



**PROPRIETARY:**  
THE INFORMATION  
CONTAINED IN THIS  
DRAWING IS THE SOLE  
PROPERTY OF  
**SAFEPath PRODUCTS**. ANY  
REPRODUCTION IN PART  
OR AS A WHOLE  
WITHOUT THE WRITTEN  
PERMISSION OF  
**SAFEPath PRODUCTS** IS  
PROHIBITED.

**CONTACT:**  
**SafePath Products:**  
1 (800) 497-2003  
**Sales:**  
quote@safepathproducts.com

UNLESS OTHERWISE SPECIFIED:  
DIMENSIONS ARE IN **INCHES**

RAMP MODEL: RAMP HEIGHT: RAMP WEIGHT:	MRED 2190 (WITH SHIM)
	2 $\frac{3}{4}$ "
	75 LBS.

LAST UPDATE:  
1/9/2025

A

2

1