

# KEYSTONE INTERLOCK



## DETAILS:

**Size:**

37" W x 37" L x 1" (9.5 sqft)

**Weight:**

56 lbs

**Colors:** (Actual colors may vary)

Black, Grey, Brown, Redwood

**Applications:**

Compacted surface, ideal for both in-ground and re-surfacing.

**Shipping:**

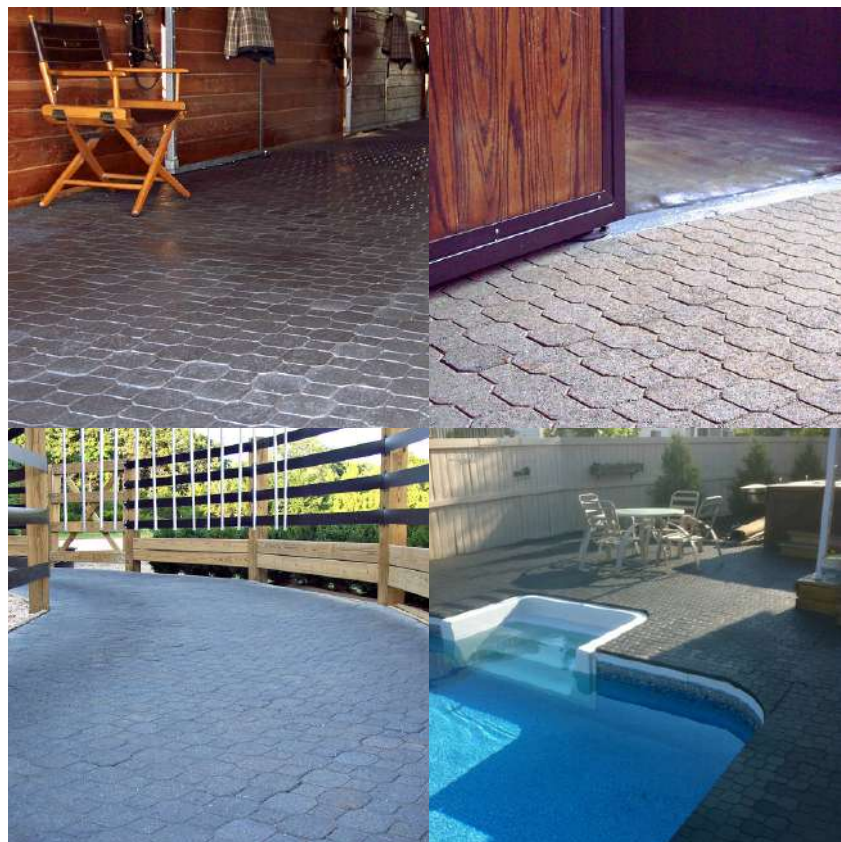
FOB Manufacturer

*4.25 tires are recycled  
to make one mat!*

## ADVANTAGES:

- Offers a patented true **4-way interlock** with the elegance of the keystone-cobble pattern.
- Recommended for all **pedestrian** applications and installations.
- An ideal **alternative** to brick pavers.
- Extremely **fast & easy to install**.
- Safe, **anti-slip** surface.
- All season all-weather **durability**.
- Patented fully **interlocking** design.
- Made from **100% recycled rubber tires**.
- In areas where there are no edge or wall restraints, snap-edging or restraint bordering of some type may be recommended. (Not necessarily required in all situations).

## COLORS:



Distributed by



A Revolution in Floor Safety

760-942-2914

bob@diamond-safety.com  
www.diamond-safety.com