

TECHNICAL DATA



Description

Kid Kushion playground safety tiles are a resilient surfacing designed to provide head impact attenuation (fall safety) up to a height of 10 feet



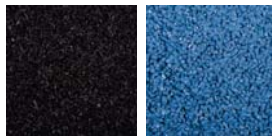
Kid Kushion playground safety tiles are manufactured from 100% post-consumer waste tires and provide an exceptionally durable, safe, low maintenance option to Engineered Bark, Gravel or Sand.



Uses

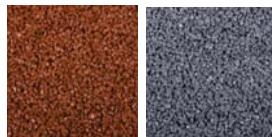
Kid Kushion playground safety tiles are ideally suited to improve the beauty, comfort and ease of maintenance in various environments including daycare centers, playgrounds, community centers, schools and more.

Colors



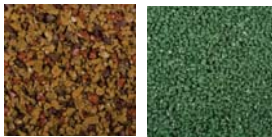
Black

Blue



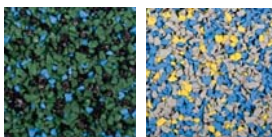
Red

Gray



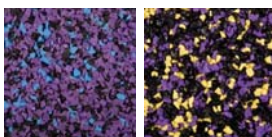
Earth

Green



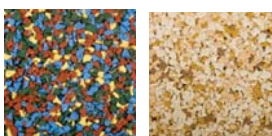
Green Fields

Sunburst



Purple Mountain

Cosmic



Fiesta

Hawaiian

Advantages

- **Kid Kushion** playground safety tiles are IPEMA Certified to ASTM F1292 for head impact attenuation up to fall heights of 10 feet.
- **Kid Kushion** playground safety tiles are ADA compliant and meet ASTM and SPSC requirements.
- **Kid Kushion** playground safety tiles are water permeable providing a fast drying surface easily permits surface water to drain per the construction design.
- **Kid Kushion** playground safety tiles are environmentally friendly, molded from 100% California recycled waste tires diverting as many as 2.5 tires per tile from our landfills.
- **Kid Kushion** playground safety tiles are safe for our children containing no toxic materials and certified to be 100% steel free.
- **Kid Kushion** playground safety tiles are skid resistant providing a safe surface for our children whether wet or dry.

Advantages (Continued)

- **Kid Kushion** playground safety tiles are modular in design making them easy to install over the largest selection of sub-grades including concrete, asphalt, wood decking and compacted gravel.
- **Kid Kushion** playground safety tiles are easy to maintain requiring only basic cleaning with a broom, vacuum or water hose on a regular basis.
- **Kid Kushion** playground safety tiles come in a variety of colors providing a multitude of design options to meet any need.
- **Kid Kushion** playground safety tiles are backed by the industries leading manufacturer of rubber molded safety tiles and accessories and come with a 5 Year Limited Material Warranty.

Product Specification

Tile Size:	24" x 24" ± 1/8"
Tile Thickness:	1", 2.5", 3.5", 3.75"
Tile Weight:	15.75lb, 28.00lb, 33.25lb, 35.75lb

Physical Properties

Characteristic	Test	Result
Flame Spread:	ASTM E108	Class A
Flammability:	ASTM E648	Class II
Flammability:	ASTM D2859	Pass
Accessibility:	ASTM F1951	.31 F / .34 S
Toxicity:	ASTM D2075	Lead Free
Slip Resistance:	ASTM D2047	.84 (Pass)
Skid Resistance:	ASTM E303	Dry 96, Wet 47
Tensile Strength:	ASTM D412	1175.3 psi
Wear Resistance:	ASTM D3884	1.64% Loss/3000c
UV Resistances:	QPanel QUV	<3.0/4032 ksqm

Head Impact Attenuation—ASTM 1292-09

Product Thickness:	Certified Height:
1.00"	2 feet
2.50"	6 feet
3.50"	8 feet
3.75"	10 feet